

Products 2019

Mechanisms

INSTAR
PLANE 100%
FRIENDLY 3
EPRON DOT
EPRON SOLO

Seats

KITE
MODULA 1

Bases

QUOIN
TREVI

DONATI

DONATI

Products 2019

DONATI

Donati S.p.A.

Via Paderno, 19
25050 Rodengo Saiano (BS)
Italy
phone +39.030.6818711
fax +39.030.6810448
info@donati.eu
www.donati.eu

Edition

April 2019 - REV01

Graphic — Rendering

Matteo Veneziani

Printing

ColorArt, Rodengo Saiano, Italy

Terms & Conditions

Each Donati product in this catalogue is made in Italy within a process in compliance with UNI EN ISO 9001: 2015 quality standard and UNI EN ISO 14001: 2015 environmental standard.

Donati reserves the right to make changes to the products shown at any time without prior notice. The photographs and product descriptions are indicative.

Copyright Notice — Trademarks

® Donati is a registered trademark of Donati S.p.A. — All rights reserved. All information and content on this document are the property of Donati S.p.A. or its licensors. The content is protected by copyright laws, trademark and design rights. Any unauthorized use of the content will be considered a violation of the intellectual property rights. Unless otherwise stated in this document, no content may be copied, distributed, published or used in any way, in whole or in part, without prior written agreement from Donati S.p.A.

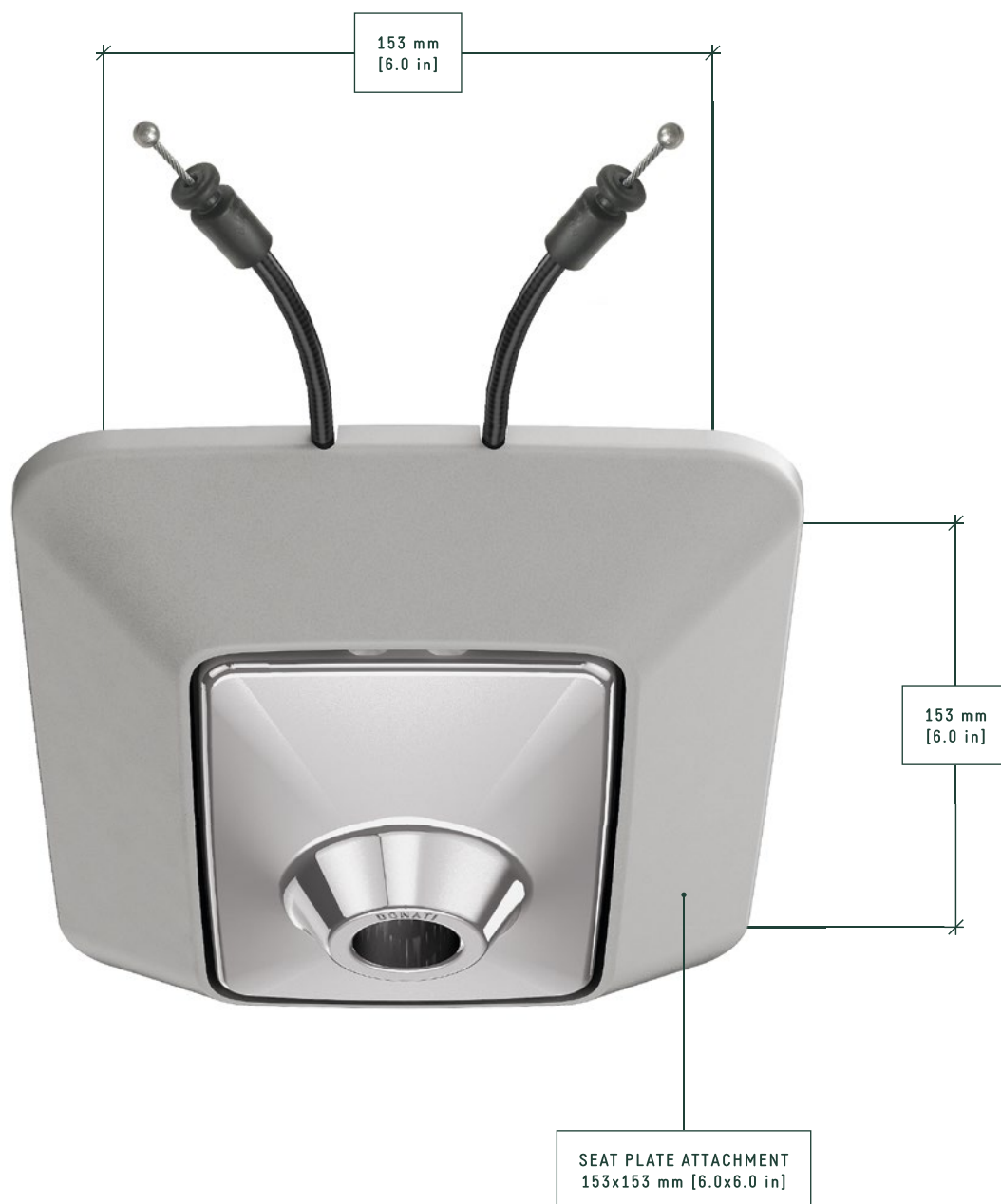
Index

MECHANISMS	INSTAR	04
	PLANE 100%	08
	FRIENDLY 3	12
	EPRON SOLO	18
SEATS	KITE	22
	MODULA 1	26
BASES	QUOIN	30
	TREVI	34

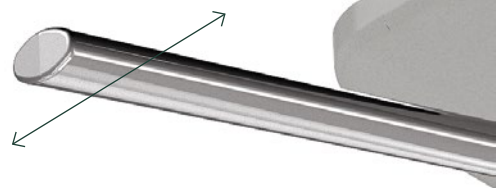
| **Instar** |



DONATI



Bowden cable version: more compact and discreet. The controls are activated by cables which levers are developed according to the design of each chair project.





Instar is the new Donati rocking mechanism, slim and versatile. Made of die-cast aluminium with a plastic cover to keep the clean and refined design. Design by Strand + Hvass. Standard version tilt angles:
— 7° backwards
— 4° forwards
Tilt lock version:
— 7° backwards only

MULTI-FUNCTION ZAMAK
LEVER: HEIGHT ADJUSTMENT
AND - OPTIONAL - LOCK/
UNLOCK FUNCTIONS



Plane 100%



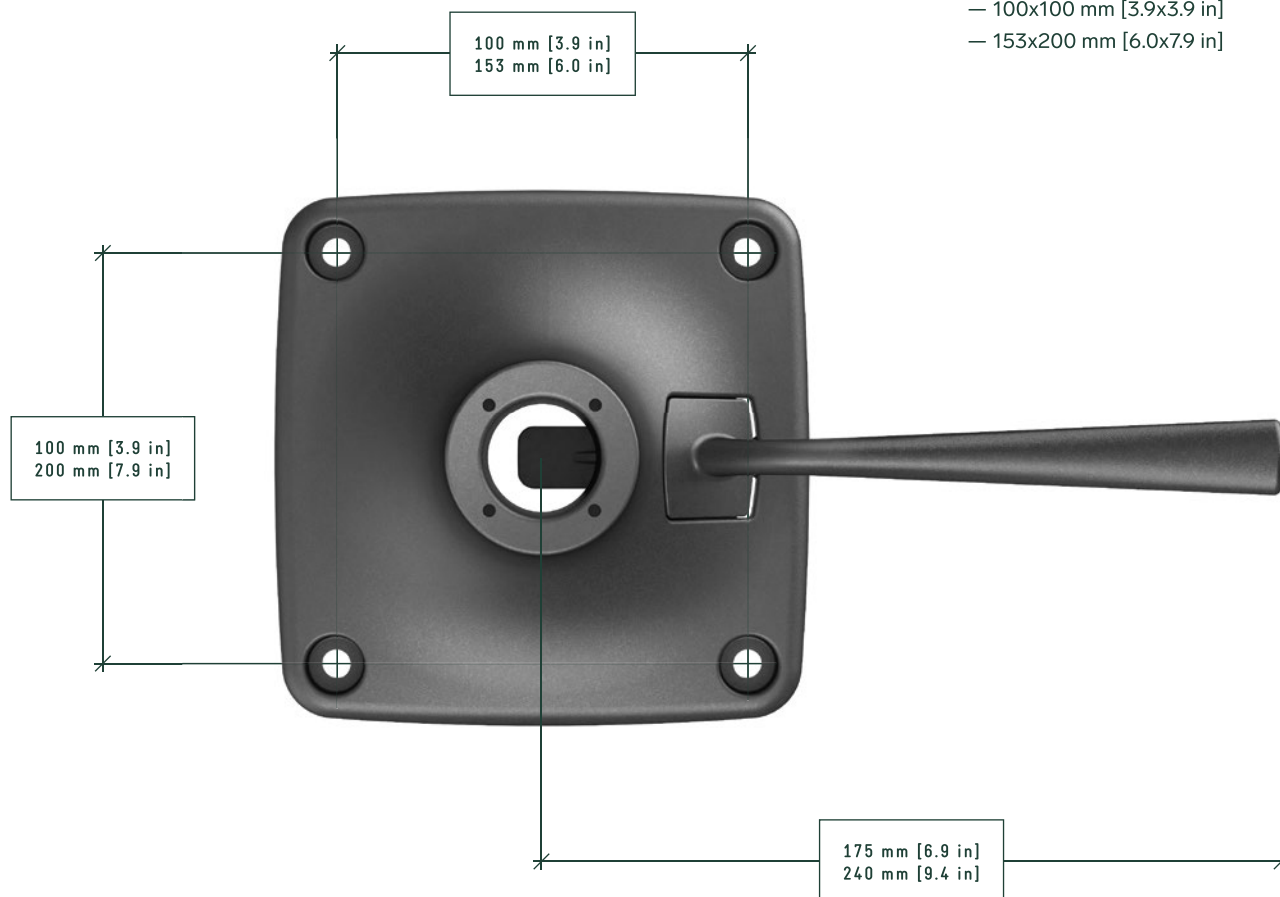
DONATI



Plane 100% is the new Donati fixed support made of 2 plastic components. It is suitable for standard gas cylinders with a 28 mm [1.1 in] diameter Morse taper.

Plane 100% is available in 2 seat connection options:

- 100x100 mm [3.9x3.9 in]
- 153x200 mm [6.0x7.9 in]



Thin and elegant, Plane 100% fits perfectly to the gas cylinder metal cover (diameter 45 mm [1.8 in]) maintaining the subtle continuity in aesthetics.



AVAILABLE WITH AND WITHOUT HEIGHT ADJUSTMENT LEVER

Friendly 3



DONATI

The Friendly 3 is an all-in-one system: all adjustment functions are integrated in the seat structure.



Seat sliding travel options:

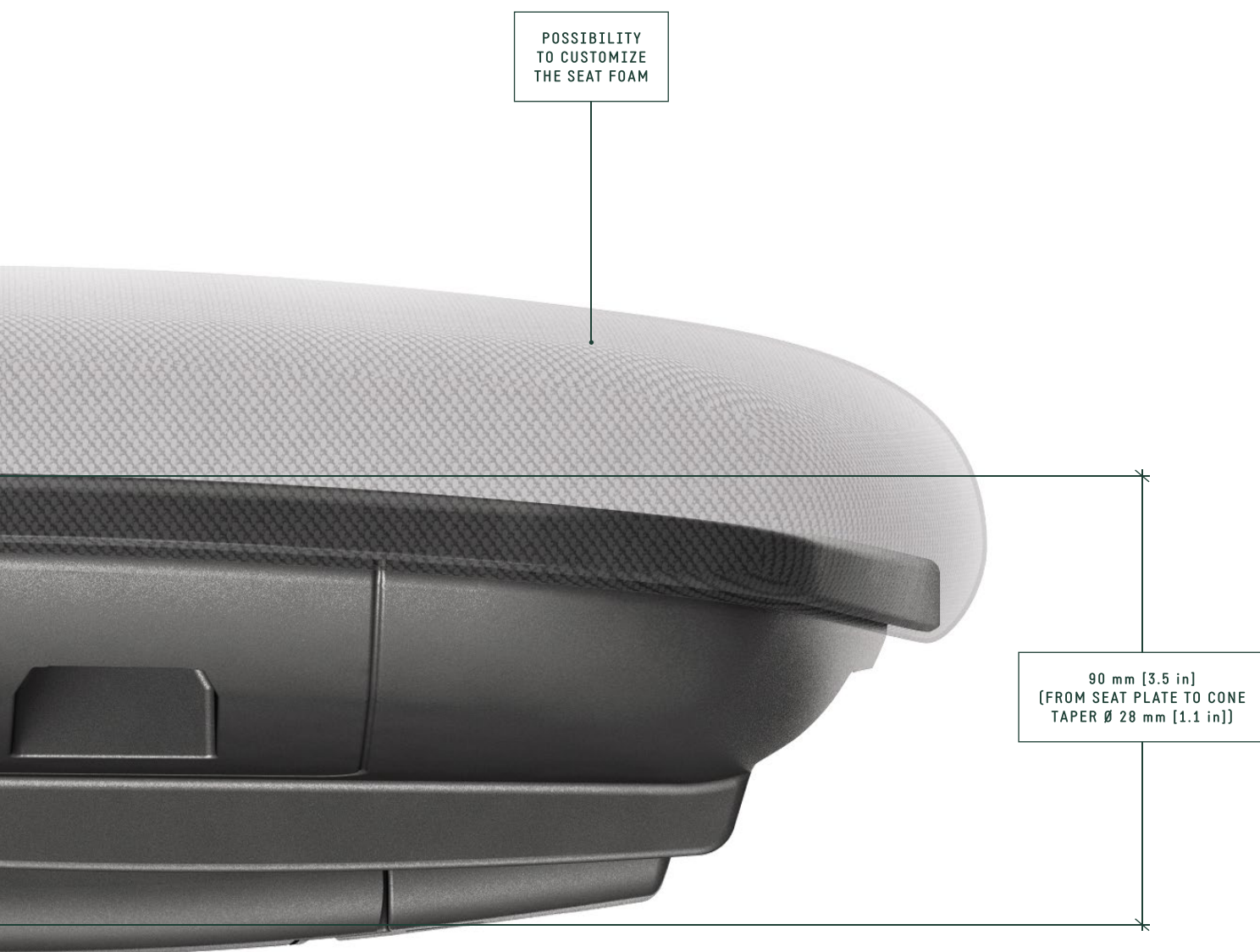
- 100 mm [3.9 in]
- 70 mm [2.8 in]
- 50 mm [2.0 in]



Friendly 3 is the slimmest new self-weighing mechanism and seat package that Donati ever created: only 90 mm [3.5 in] of thickness (dimension measured from the centre of the seat to the Morse cone Ø 28 mm [1.1 in] of the mechanism).

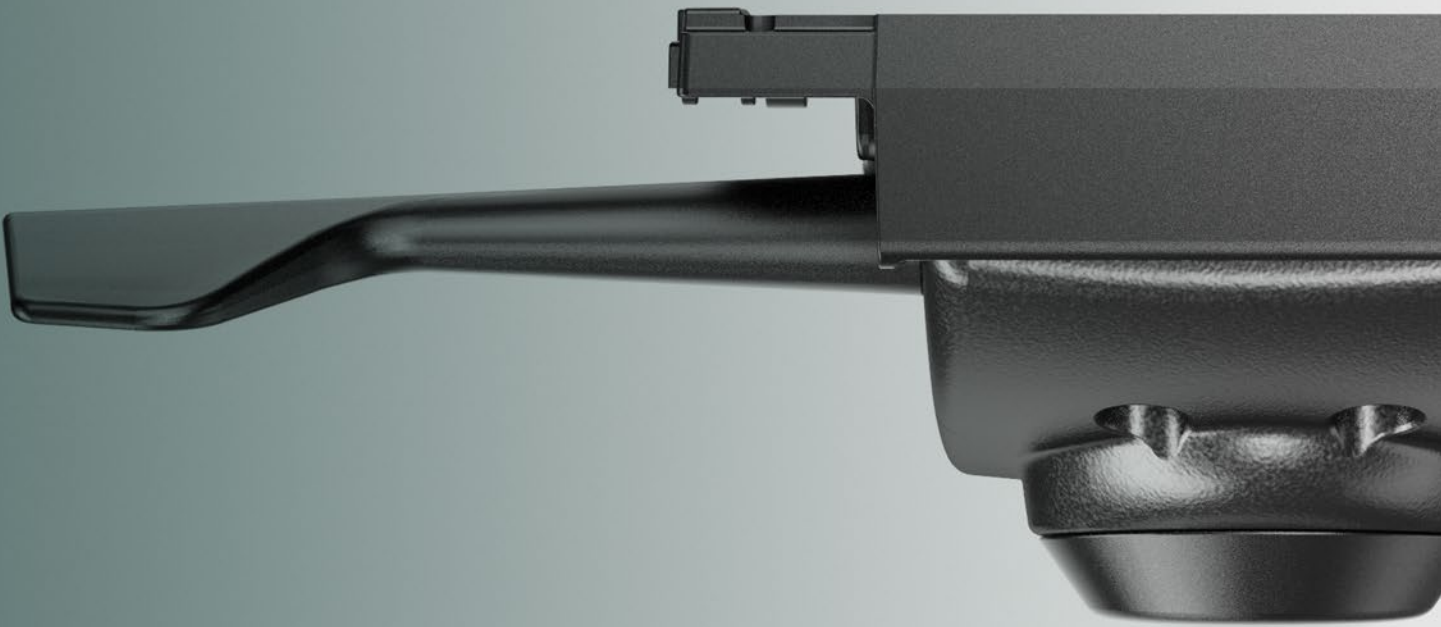


THE BOWDEN CABLE COMMANDS
ARE TOTALLY INTEGRATED AND
CONCEALED IN THE SEAT PAN



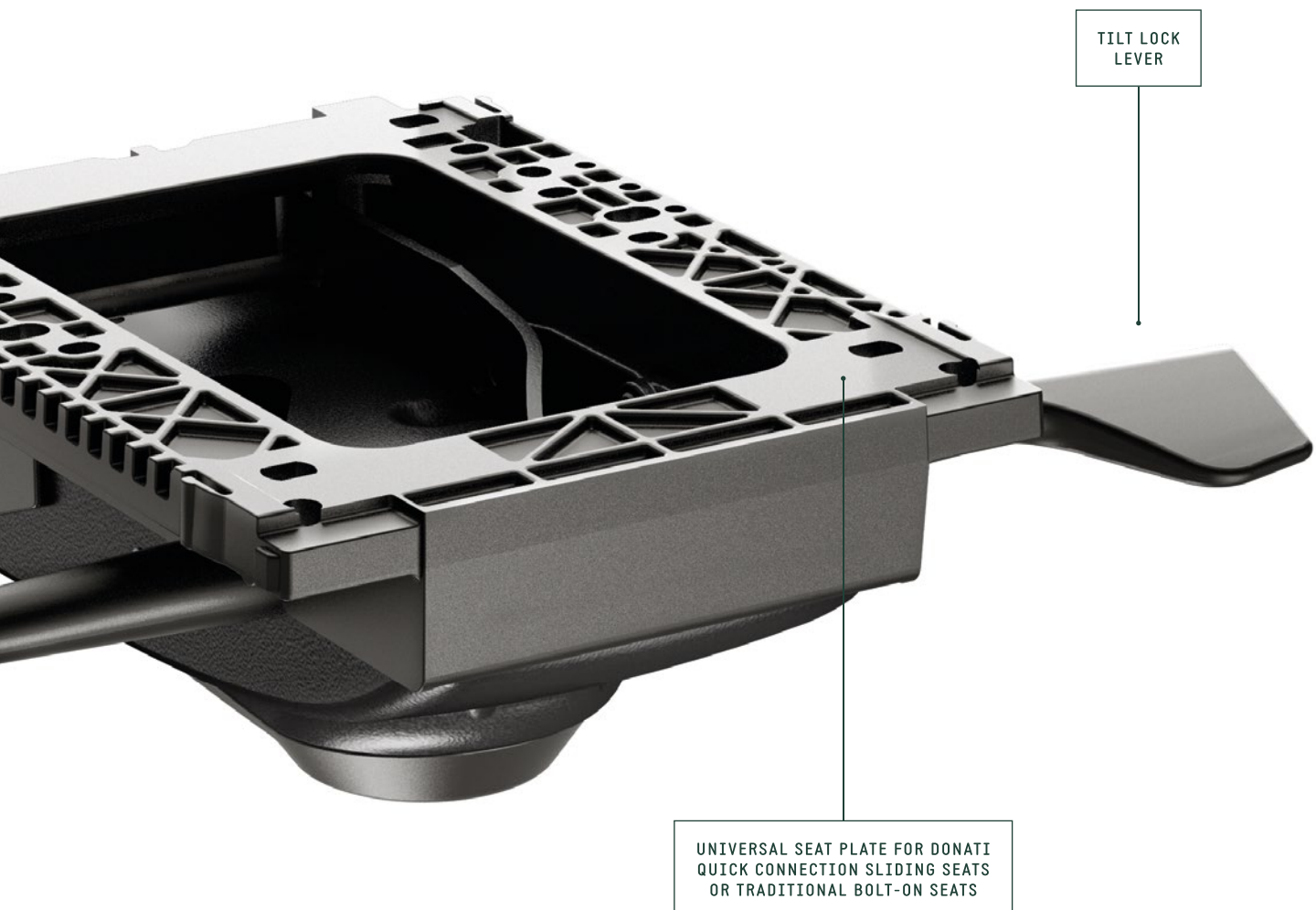
The mechanism features a synchro self-weighting motion, 6° of seat tilt angle and 20° of backrest tilt angle.

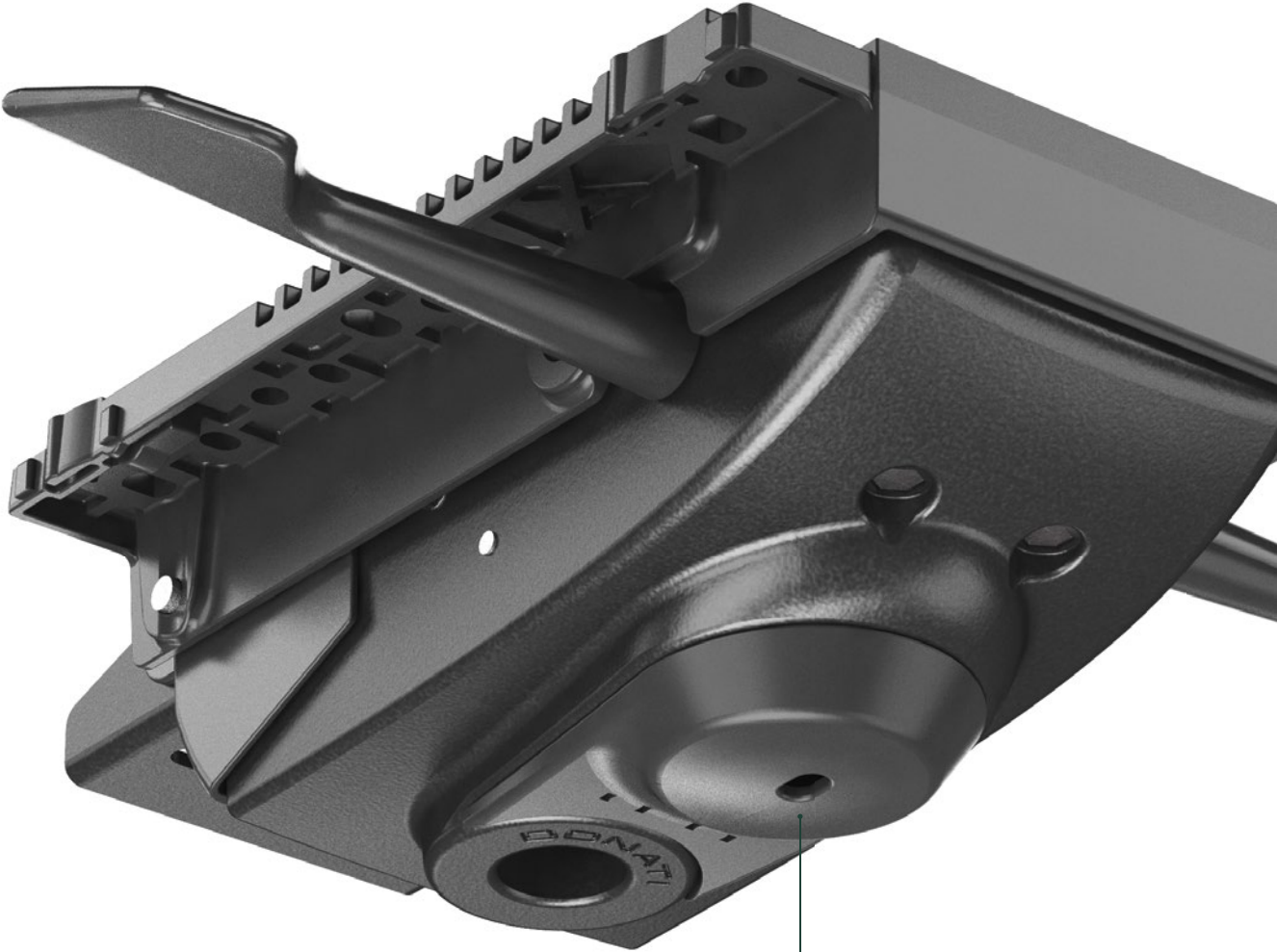
Epron Solo



DONATI

Epron Solo synchronous self-adjusting mechanism is the latest addition to the wide Epron family. The new lever design and the self-adjusting high-performance spring give Solo a great value, as well as a modern and compact design.



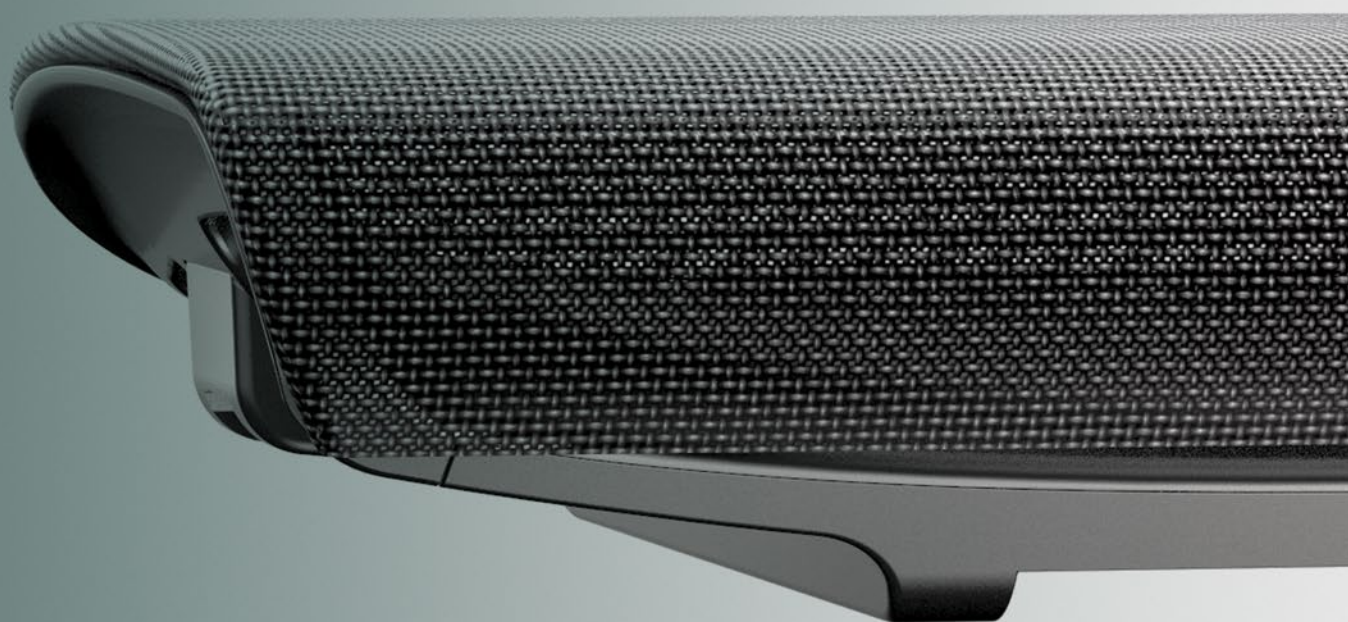


TENSION ADJUSTMENT
BY HEX KEY

NEW LEVER
DESIGN



Kite





DONATI STANDARD
ARMREST CONNECTION

Kite is the new quick connection mesh seat with integrated sliding system. The mesh assembly technique has been simplified and optimized to its maximum.



KITE'S FLEXIBLE UPPER
FRAME ALLOWS THE
ASSEMBLY OF ANY TYPE
OF MESH WITHOUT THE
NEED OF SPECIAL TOOLS



Frameless front avoids pressure and contact stress to the back of the legs. Kite is suitable for quick connection Donati mechanism with universal seat plate or rails.



Modula 1





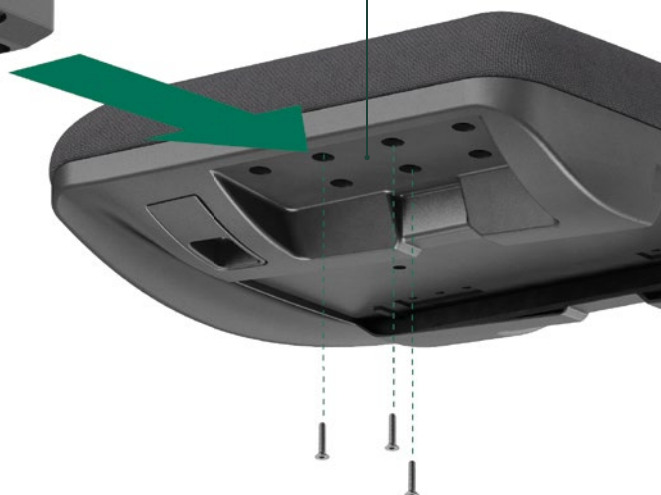
The fulcrum of the project is the structural plastic outer plate bolted to the wooden seat. The shape is designed to match the wooden seat specifications provided by the customer.

Both Donati BeO 1D armrests and customers' own armrests are compatible with this system.

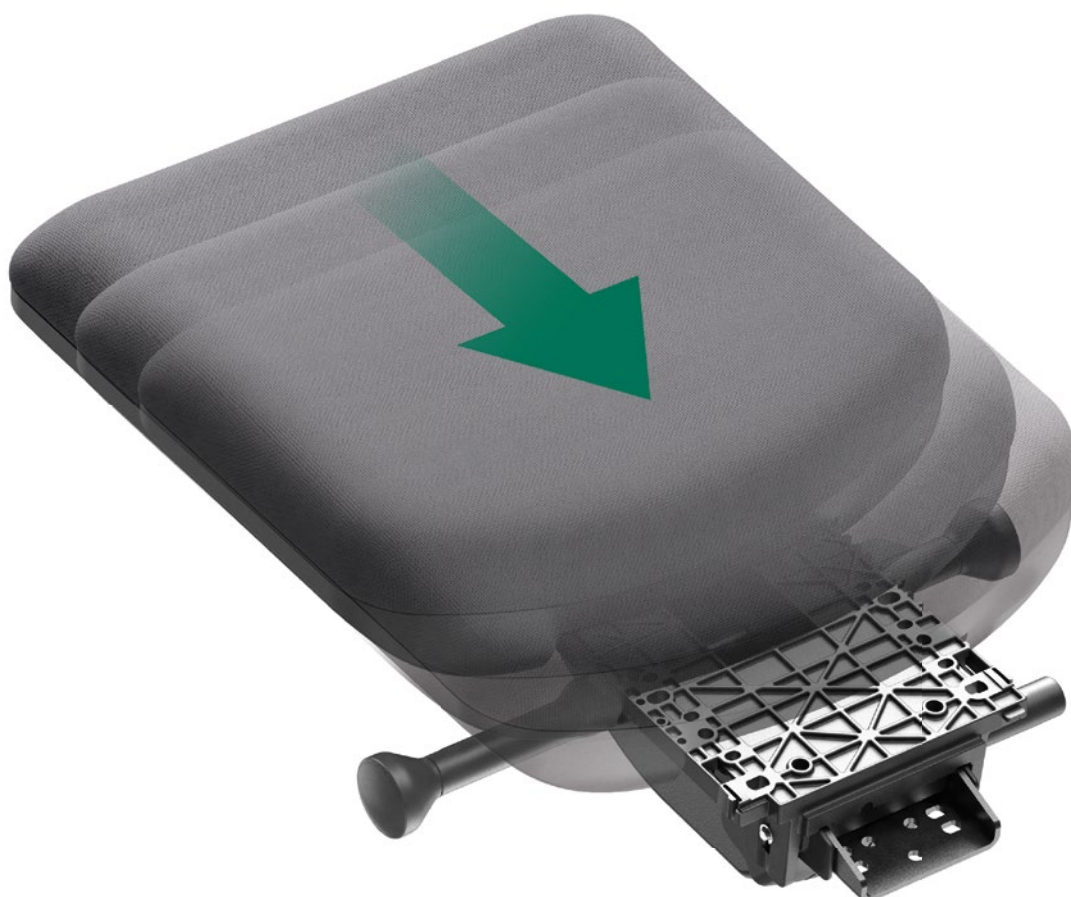
Examples of customised arm hole patterns



THE ARMREST ATTACHMENT CONFIGURATION CAN BE CUSTOMIZED BASED ON DIFFERENT NEEDS



Once the Modula 1 sliding outer plate is bolted onto the wooden seat it is possible to fit any quick connection Donati mechanism with universal plate or rails.



Quoin



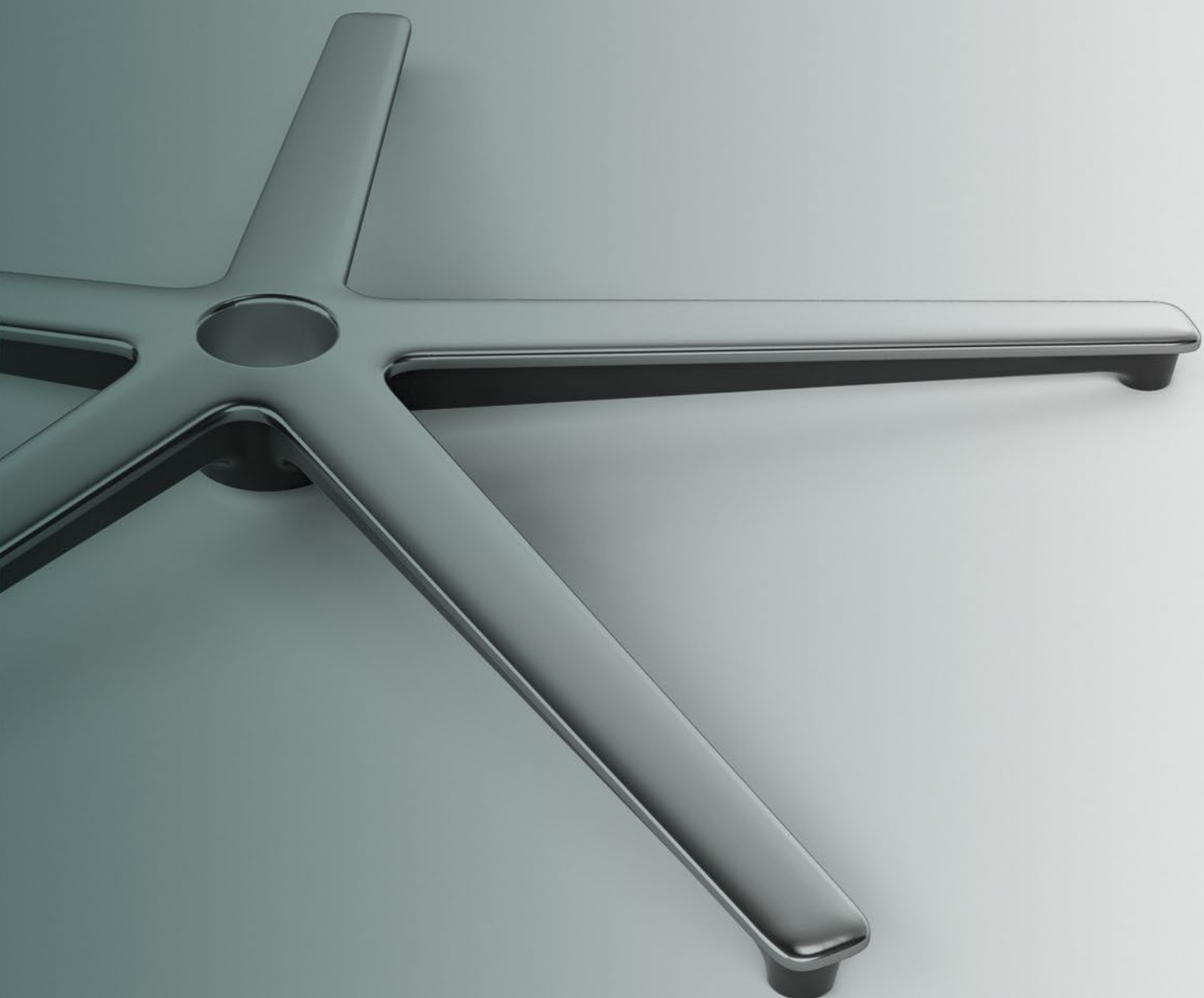
DONATI

New collection of Donati
bases available in die-cast
aluminium and nylon.
Attention was focused on the
aesthetics and proportions.



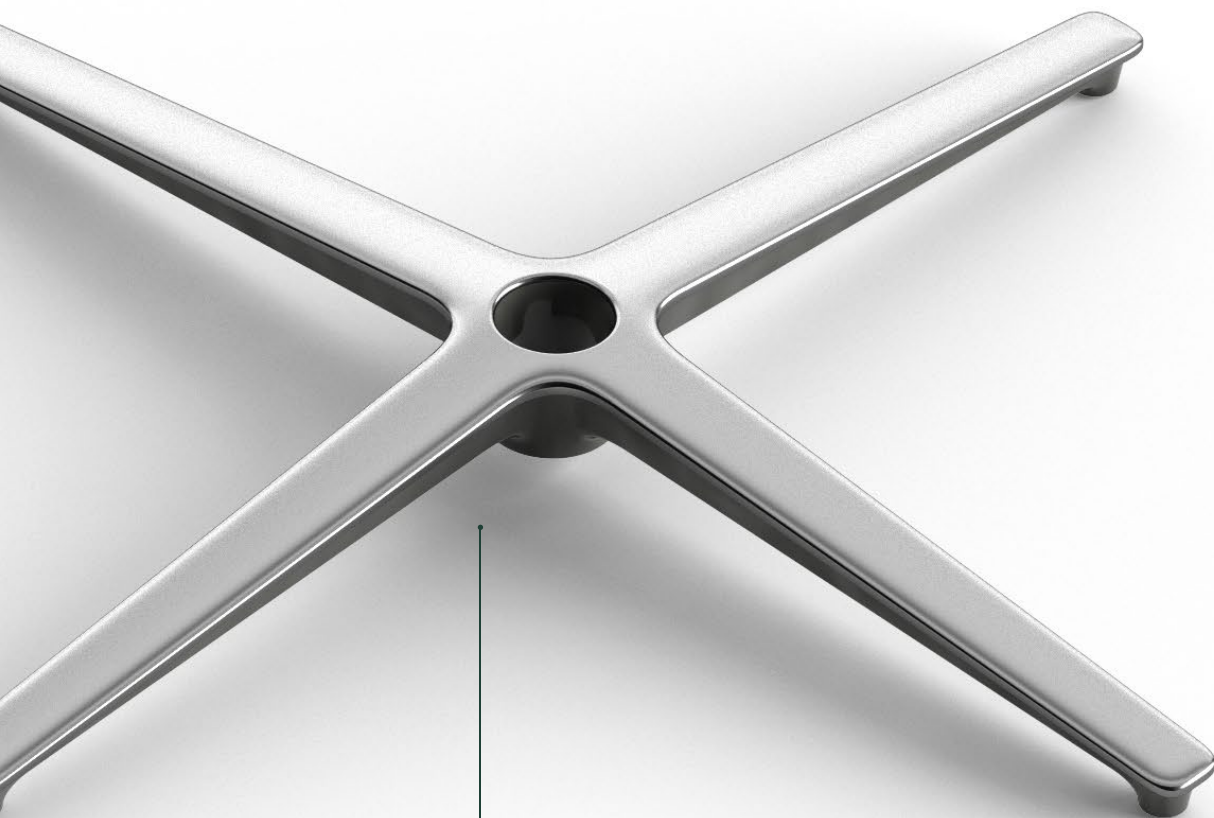


Trevi



TREVI - 5 STAR ALUMINIUM BASE
AVAILABLE IN 2 DIMENSIONS:
- EXTERNAL Ø 680 mm [26.8 in]
- EXTERNAL Ø 620 mm [24.4 in]





TREVI - 4 STAR ALUMINIUM BASE
EXTERNAL Ø 714 mm [28.1 in]
GLIDES Ø 680 mm [26.8 in]

New collection of Donati bases, modern with a sleek contemporary design. Available in 5 and 4 star versions. Design by Alejandro Valdés.



DONATI

Donati S.p.A.

Via Paderno, 19
25050 Rodengo Saiano (BS)
Italy

phone +39.030.6818711
fax +39.030.6810448
info@donati.eu

www.donati.eu