

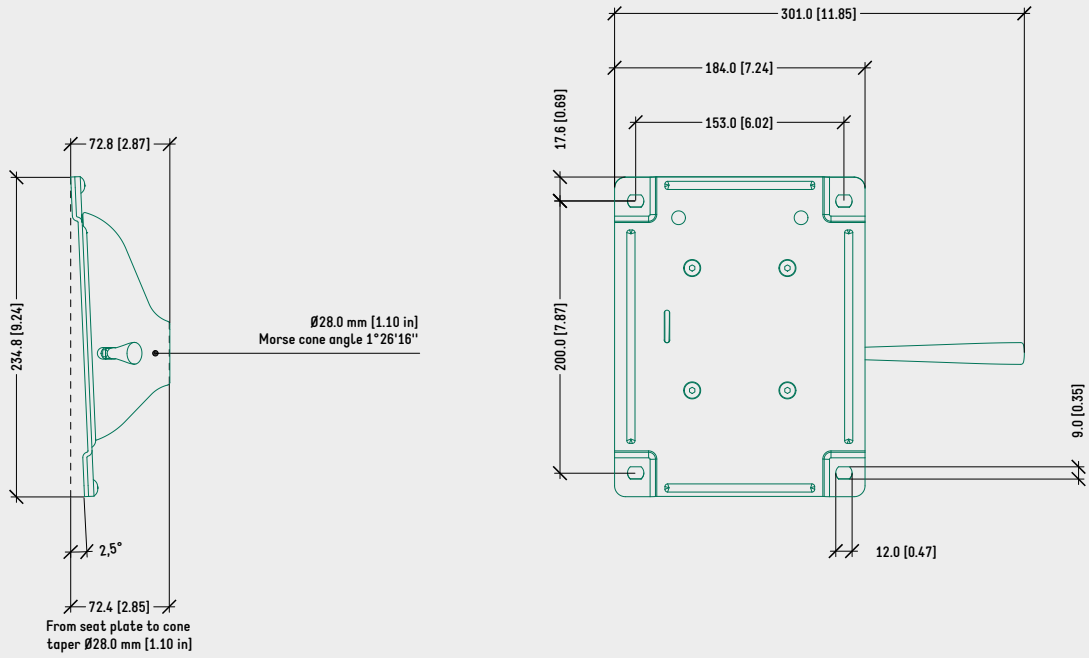
SPECIFICATIONS	
TYPE	Fixed support
FACTORY SEAT SETUP	2,5° backwards
[OPT.] HEIGHT ADJUSTMENT	By lever
SEAT CONNECTION	Bolt-on plate 153 x 200 mm [6.02 x 7.87 in]
MORSE CONE DIAMETER	28,0 mm [1.10 in]
MECHANISM SURFACE FINISH	— Polished — Black painted
GAS LEVER FINISH	— Chrome (Zamak) — Black painted (Zamak) — Black (Nylon)
FIXED W/O HEIGHT ADJUSTMENT	
ITEMS PER BOX	16
BOXES PER PALLET (MOQ)	15 boxes (240 items)
FIXED WITH HEIGHT ADJUSTMENT	
ITEMS PER BOX	12
BOXES PER PALLET (MOQ)	15 boxes (180 items)
PALLET SIZE (LxWxH)	80 x 120 x 170 cm [31.5 x 47.2 x 66.9 in]

PRODUCT CODES

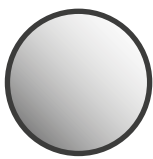
.....	
<u>ARMONICO FIXED WITH HEIGHT ADJUSTMENT</u>	
POLISHED	1020458
BLACK PAINTED	1020457
<u>ARMONICO FIXED W/O HEIGHT ADJUSTMENT</u>	
POLISHED	1020466
BLACK PAINTED	1020465

TECHNICAL DRAWING

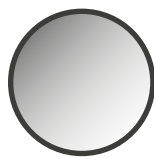
ARMONICO FIXED WITH HEIGHT ADJUSTMENT



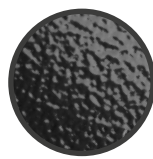
SURFACE COLOURS / FINISHES



POLISHED ALUMINIUM HOUSING



CHROMED ZAMAK LEVER



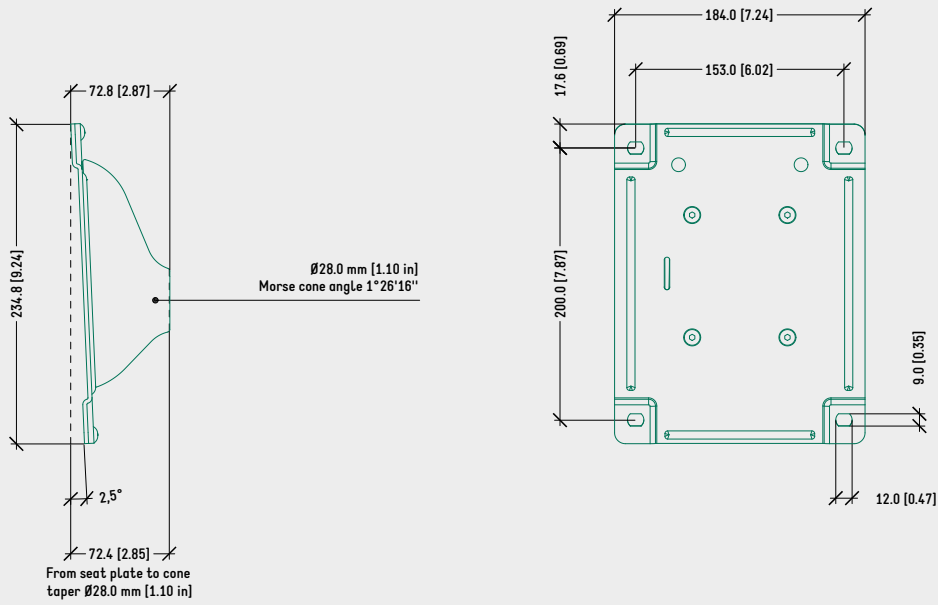
BLACK PAINTED ALUMINIUM HOUSING, LEVER, SEAT PLATE



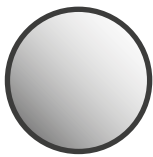
BLACK PLASTIC COVER

TECHNICAL DRAWING

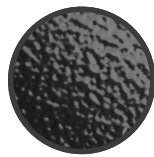
ARMONICO FIXED W/O HEIGHT ADJUSTMENT



SURFACE COLOURS / FINISHES



POLISHED ALUMINIUM HOUSING



BLACK PAINTED ALUMINIUM HOUSING