

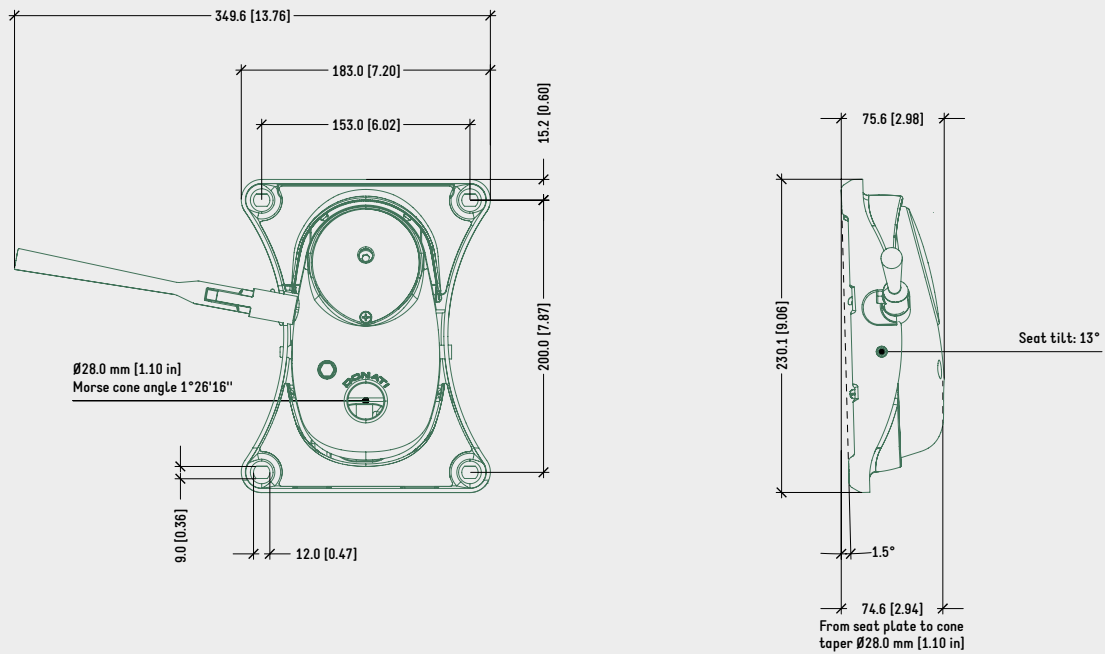
SPECIFICATIONS	
TYPE	Tilt mechanism
TILT ANGLES	13°
TILT LOCKING	1 position, by lever
FACTORY SEAT SETUP	1,5° backwards
HEIGHT ADJUSTMENT	By lever
COMFORT	Tension fine-tuning by hex key
SEAT CONNECTION	Steel plate 153 x 200 mm [6.02 x 7.87 in]
MORSE CONE DIAMETER	28,0 mm [1.10 in]
MECHANISM SURFACE FINISH	— Polished — Black painted
GAS LEVER FINISH	— Chrome — Black painted
COVER FINISH	— Black — Basalt grey (RAL 7012)
ITEMS PER BOX	84
BOXES PER PALLET (MOQ)	4 boxes (336 items)
PALLET SIZE (LxWxH)	80 x 120 x 210 cm [31.5 x 47.2 x 82.7 in]

PRODUCT CODES

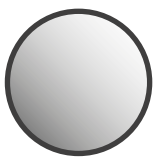
.....	
<u>MPD38 STEEL PLATE W/O KNOB</u>	
POLISHED	1020311
BLACK PAINTED	1020310

TECHNICAL DRAWING

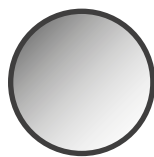
MPD38 METAL PLATE W/O KNOB



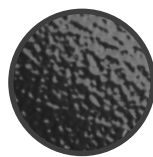
SURFACE COLOURS / FINISHES



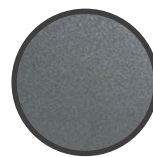
POLISHED ALUMINIUM HOUSING



CHROMED ZAMAK LEVER



BLACK PAINTED ALUMINIUM HOUSING, LEVER, SEAT PLATE



BASALT GREY (RAL 7012) PLASTIC COVERS



BLACK PLASTIC COVERS