



## SPECIFICATIONS

|                          |  |
|--------------------------|--|
| TYPE                     | <ul style="list-style-type: none"> <li>— Tilt mechanism</li> <li>— Tilt mechanism with tilt lock</li> </ul>                          |
| TILT ANGLES              | <ul style="list-style-type: none"> <li>— 7° backward / 4° forward (W/O tilt lock)</li> <li>— 7° backward (with tilt lock)</li> </ul> |
| [OPT.] TILT LOCKING      | 1 position, by Bowden cable  |
| FACTORY SEAT SETUP       | <ul style="list-style-type: none"> <li>— 2,5° backward (standard version)</li> <li>— 6° backward (loungue version)</li> </ul>        |
| HEIGHT ADJUSTMENT        | By Bowden cable  |
| COMFORT                  | Factory setup  |
| SEAT CONNECTION          | Bolt-on plate 153 x 153 mm [6.02 x 6.02 in]  |
| MORSE CONE DIAMETER      | 28,0 mm [1.10 in]  |
| MECHANISM SURFACE FINISH | <ul style="list-style-type: none"> <li>— Polished</li> <li>— Black painted</li> </ul>  |
| DESIGN BY                | Strand + Hvass   |

## PRODUCT CODES

.....  
INSTAR CABLE TILT - WITH TILT LOCK

POLISHED (STANDARD VER.) 1022701

BLACK PAINTED (STANDARD VER.) 1022700

POLISHED (LOUNGE VER.) On request

BLACK PAINTED (LOUNGE VER.) On request

INSTAR CABLE TILT - W/O TILT LOCK

POLISHED (STANDARD VER.) 1022501

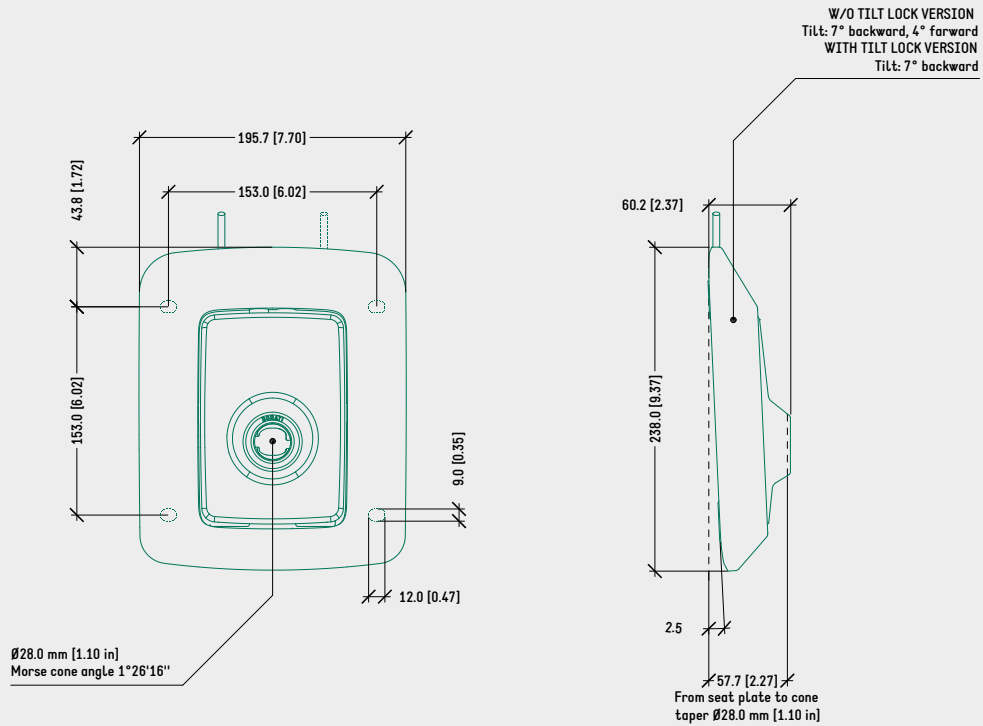
BLACK PAINTED (STANDARD VER.) 1022500

POLISHED (LOUNGE VER.) On request

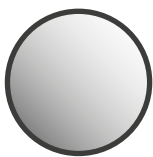
BLACK PAINTED (LOUNGE VER.) On request

TECHNICAL DRAWING

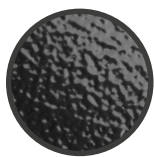
INSTAR CABLE TILT - STANDARD VER.



SURFACE COLOURS / FINISHES



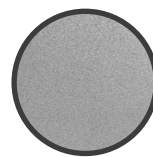
POLISHED ALUMINIUM HOUSING



BLACK PAINTED ALUMINIUM HOUSING, SEAT PLATE



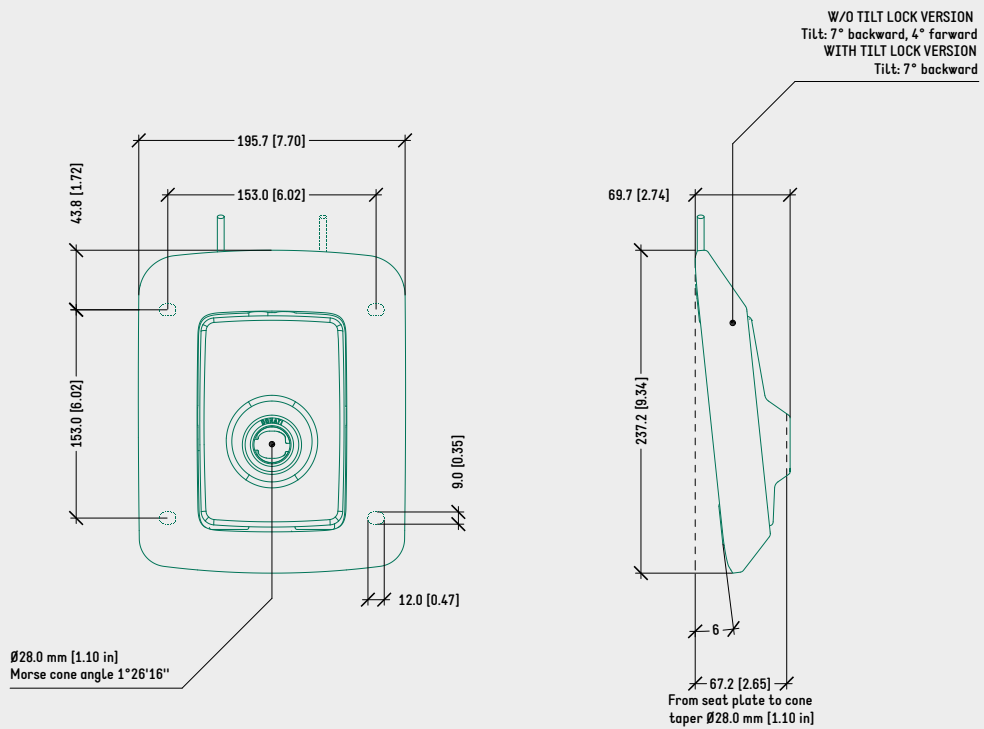
BLACK PLASTIC COVER



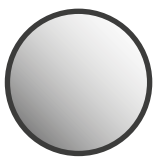
WINDOW GREY (RAL 7040) PLASTIC COVER

TECHNICAL DRAWING

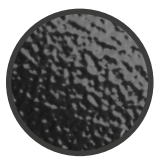
INSTAR CABLE TILT - LOUNGE VER.



SURFACE COLOURS / FINISHES



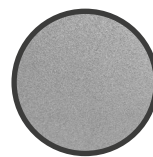
POLISHED ALUMINIUM HOUSING



BLACK PAINTED ALUMINIUM HOUSING, SEAT PLATE



BLACK PLASTIC COVER



WINDOW GREY (RAL 7040) PLASTIC COVER