

SPECIFICATIONS

TYPE	Weight-activated synchronized mechanism
TILT ANGLES	18° backrest / 1° seat
FACTORY SEAT SETUP	1,5° backward
BACKREST TILT LOCK	3 positions, by integrated lever
HEIGHT ADJUSTMENT	By seat integrated lever
COMFORT	Tension fine-tuning by hex key (provided)
SEAT CONNECTION	Integrated with the mechanism
ARMREST CONNECTION	Type-F armrest interface (BeO Friendly only)
BACK BAR CONNECTION	Width 100,0 mm [3.94 in]
MORSE CONE DIAMETER	28,0 mm [1.10 in]
LEVER FINISH	Anthracite grey (RAL 7016)
OUTER SEAT COLOR	— Black — Grey white (RAL 9002)
ITEMS PER BOX	24
BOXES PER PALLET (MOQ)	4 boxes (96 items)
PALLET SIZE [LxWxH]	80 x 120 x 210 cm [31.5 x 47.2 x 82.7 in]

PRODUCT CODES

FRIENDLY

WITH BLACK OUTER SEAT	1063001
WITH WHITE OUTER SEAT	1063004
W/O OUTER SEAT	1063002

UPHOLSTERY PLATE

4515187

OPTIONAL

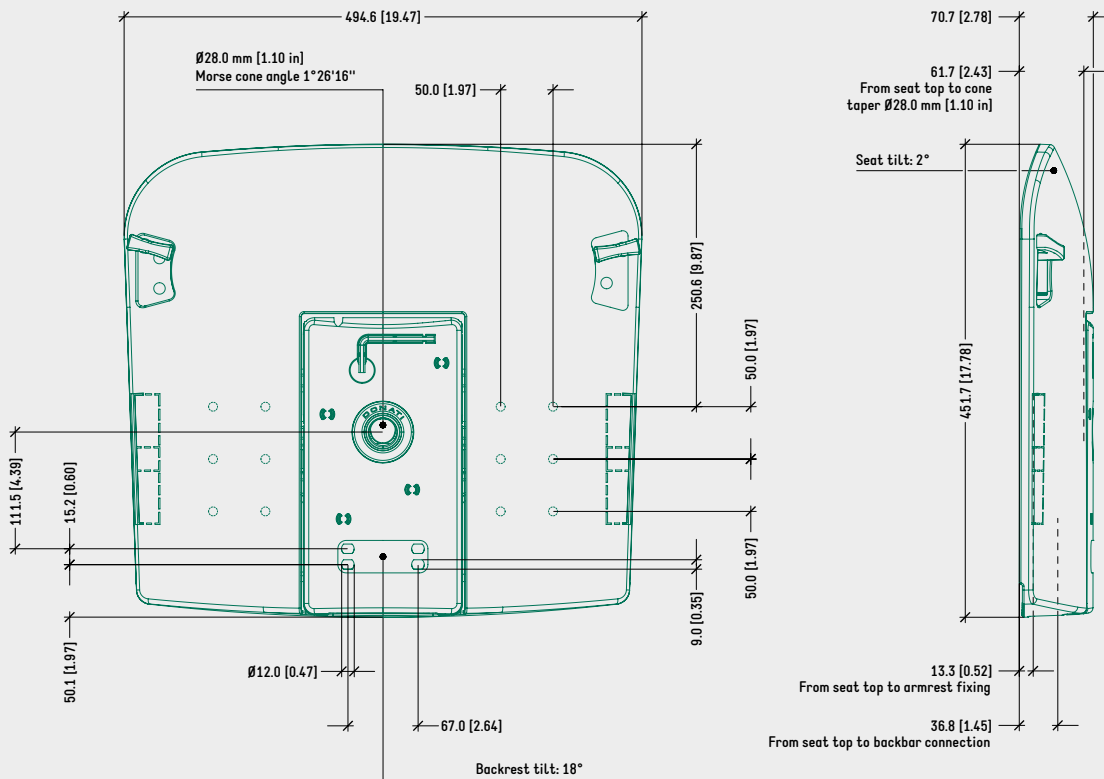
BeO FRIENDLY ARMREST

BLACK	4500590
GREY WHITE [RAL 9002]	4500591

TECHNICAL DRAWING

FRIENDLY WITH OUTER SEAT

4 FIXING HOLES BACK BAR CONNECTION PATTERN



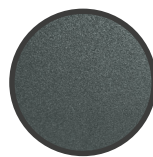
SURFACE COLOURS / FINISHES



BLACK PLASTIC COVERS



GREY WHITE (RAL 9002) PLASTIC COVERS



ANTHRACITE GREY (RAL 7016) PLASTIC LEVERS

RELATED PRODUCTS

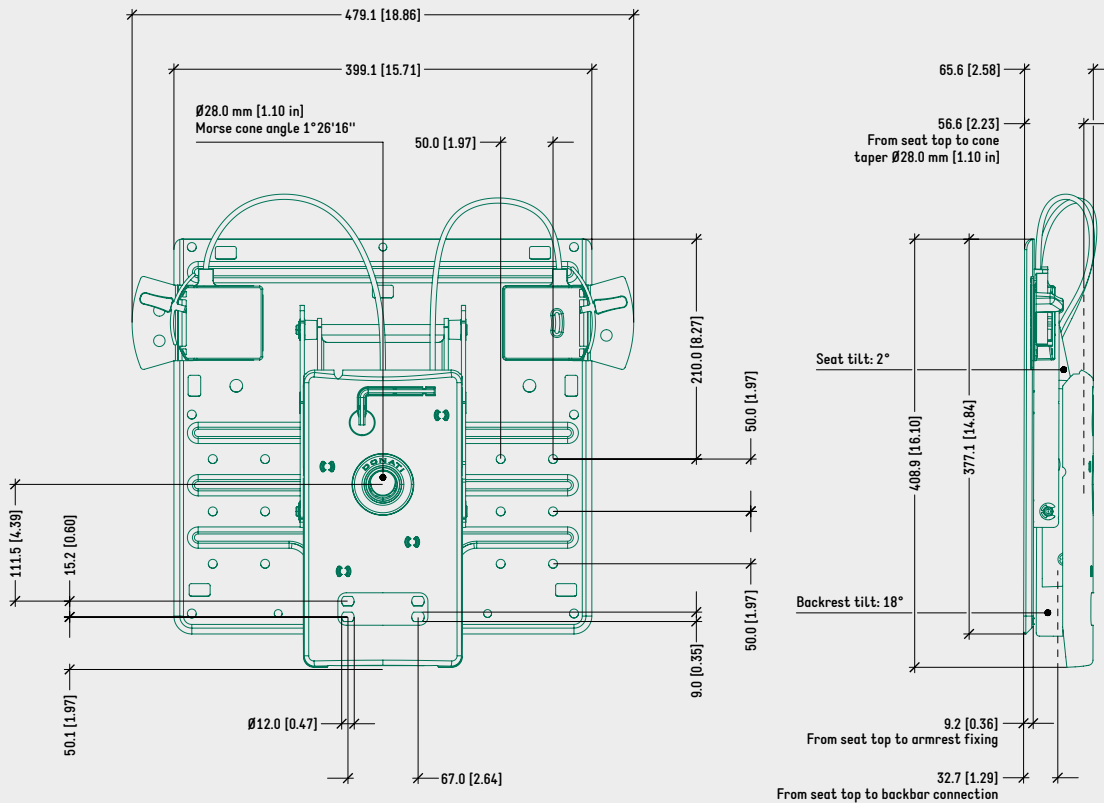
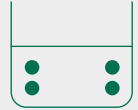


TYPE-F ARMREST INTERFACE CONNECTION ONLY (BeO FRIENDLY)

TECHNICAL DRAWING

FRIENDLY W/O OUTER SEAT

4 FIXING HOLES BACK BAR CONNECTION PATTERN



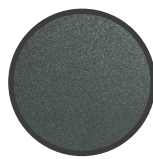
SURFACE COLOURS / FINISHES



BLACK PLASTIC COVERS



GREY WHITE (RAL 9002) PLASTIC COVERS



ANTHRACITE GREY (RAL 7016) PLASTIC LEVERS

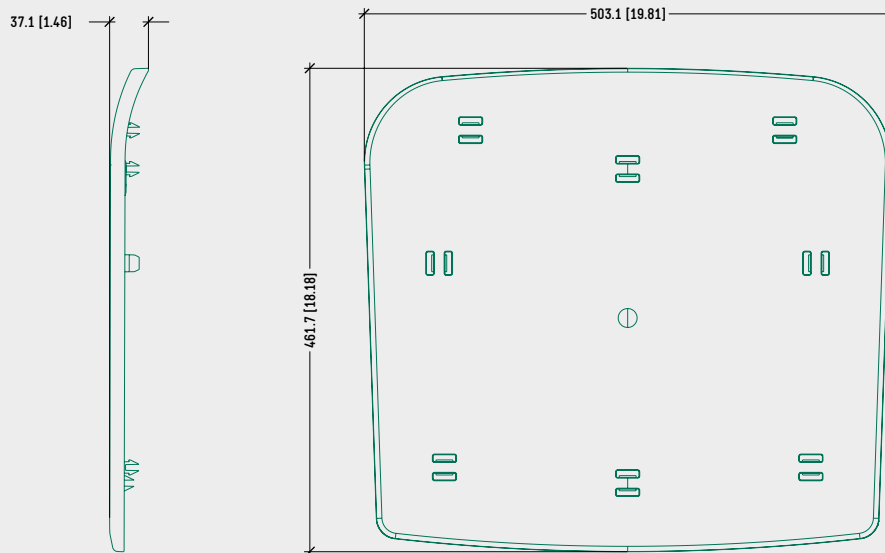
RELATED PRODUCTS



TYPE-F ARMREST INTERFACE CONNECTION ONLY (BeO FRIENDLY)

TECHNICAL DRAWING

UPHOLSTERY PLATE



SURFACE COLOURS / FINISHES

BLACK PLASTIC
UPHOLSTERY PLATE