

**SPECIFICATIONS**

TYPE	Synchro tilt mechanism
TILT ANGLE	20° backrest / 11° seat
BACKREST TILT LOCK	5 positions, by lever
HEIGHT ADJUSTMENT	By lever
COMFORT	Lower tension adjustment knob
SEAT DEPTH ADJUSTMENT	— 60 mm [2.36 in], by lever — 73 mm [2.87 in], by lever
SEAT CONNECTION	Bolt-on plate 153,0 x 200,0 mm [6.02 x 7.87 in]
BACK BAR CONNECTION	Donati standard (width 90,0 mm [3.54 in])
MORSE CONE DIAMETER	28,0 mm [1.10 in]
MECHANISM SURFACE FINISH	Black painted
LEVER FINISH	Black
ITEMS PER BOX	36
BOXES PER PALLET (MOQ)	4 boxes (144 items)
PALLET SIZE (LxWxH)	80 x 120 x 210 cm [31.5 x 47.2 x 82.7 in]

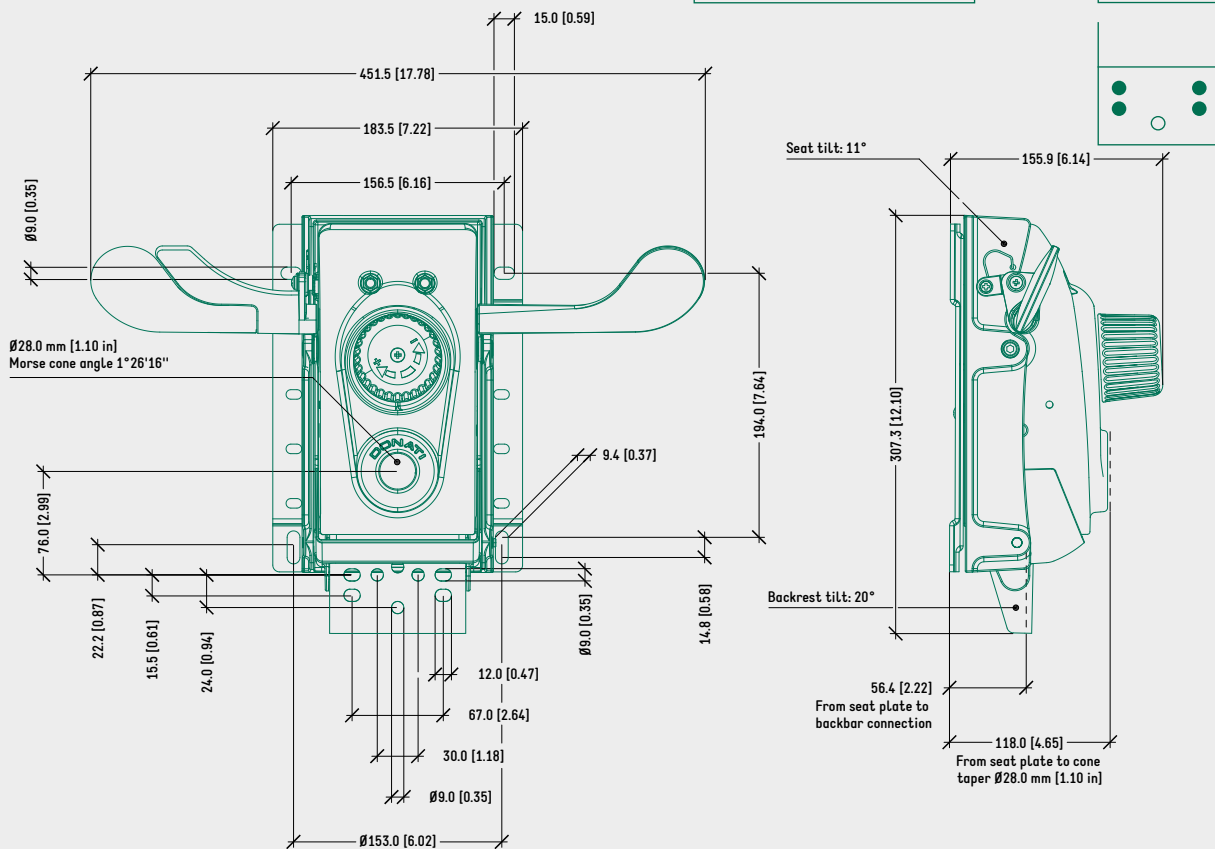
**PRODUCT CODES**

.....

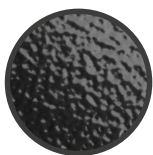
<u>EPRON TRASLA</u>	
60 mm SEAT DEPTH ADJUSTMENT	1060728
73 mm SEAT DEPTH ADJUSTMENT	On request

TECHNICAL DRAWING

EPRON TRASLA



SURFACE COLOURS / FINISHES



BLACK PAINTED ALUMINIUM HOUSING



BLACK PLASTIC LEVERS, SEAT PLATE, COVERS

RELATED PRODUCTS



DONATI BOLT-ON SLIDING OR FIXED SEAT FAMILY



BOLT-ON SEATS 153x200 mm [6.0x7.0 in] CONNECTION