

**SPECIFICATIONS**

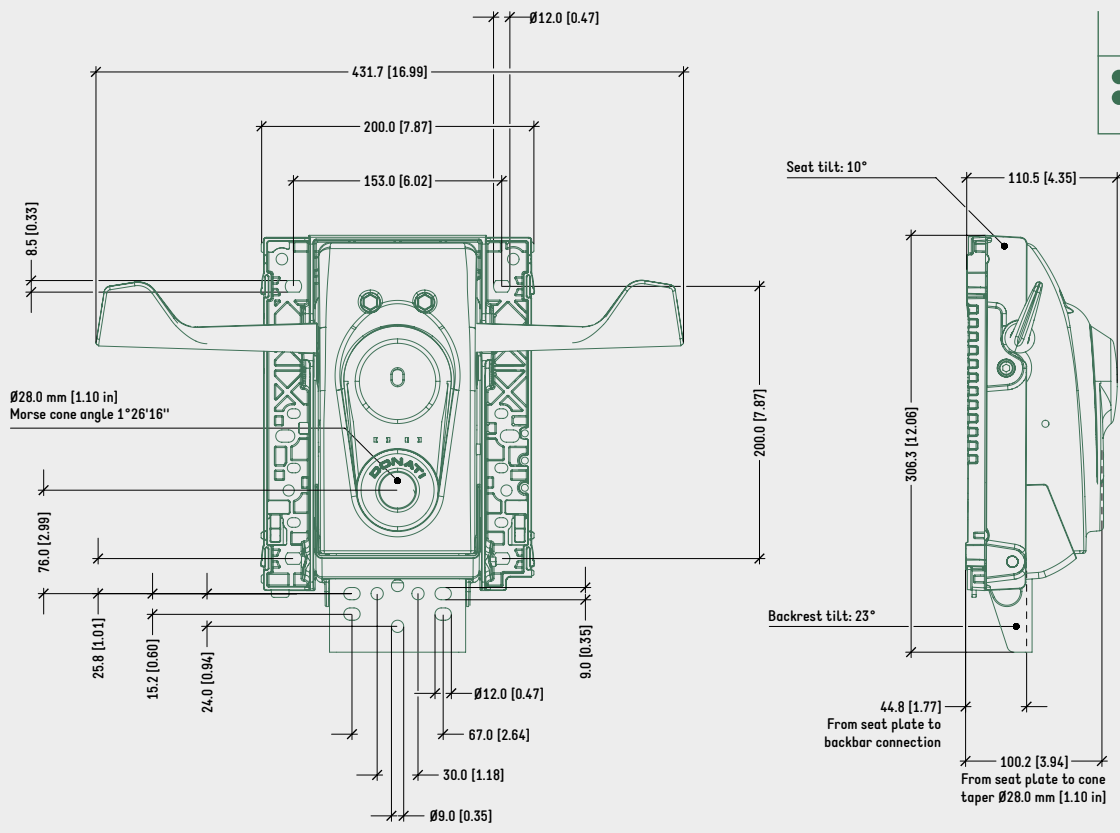
TYPE	Synchro tilt mechanism
TILT ANGLE	21° backrest / 11° seat
BACKREST TILT LOCK	5 positions, by lever
HEIGHT ADJUSTMENT	By lever
COMFORT	Tension fine-tuning by hex key
SEAT CONNECTION	Donati universal seat plate
BACK BAR CONNECTION	Donati standard (width 90,0 mm [3.54 in])
MORSE CONE DIAMETER	28,0 mm [1.10 in]
MECHANISM SURFACE FINISH	Black painted
LEVER FINISH	Black

**PRODUCT CODES**

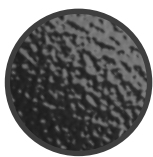
.....	
<u>EPRON SOLO</u>	
SYNCHRON	1064604

TECHNICAL DRAWING

EPRON SOLO SYNCHRON



SURFACE COLOURS / FINISHES



BLACK PAINTED ALUMINIUM HOUSING



BLACK PLASTIC LEVERS, SEAT PLATE, COVERS

RELATED PRODUCTS



DONATI QUICK CONNECTION SLIDING SEAT FAMILY



DONATI BOLT-ON SLIDING OR FIXED SEAT FAMILY



BOLT-ON SEATS 153x200 mm [6.0x7.9 in] CONNECTION



DONATI QUICK CONNECTION SLIDING ADAPTER PLATE CODE: 4515220



DONATI QUICK CONNECTION SLIDING ADAPTER MODULA 1 CODE: 4515270