

**SPECIFICATIONS**

TYPE	Synchro tilt mechanism
TILT ANGLE	23° backrest / 8,5° seat
BACKREST TILT LOCK	5 positions, by lever
HEIGHT ADJUSTMENT	By lever
SEAT ANGLE ADJUSTMENT	<ul style="list-style-type: none"> <li>— 0°</li> <li>— 5° forward</li> <li>— Free float</li> </ul>
COMFORT	<ul style="list-style-type: none"> <li>— Side tension adjustment crank <u>or</u></li> <li>— Side tension adjustment knob</li> </ul>
SEAT CONNECTION	Donati universal seat plate
BACK BAR CONNECTION	Donati standard (width 90,0 mm [3.54 in])
MORSE CONE DIAMETER	28,0 mm [1.10 in]
MECHANISM SURFACE FINISH	Black painted
LEVER FINISH	Black
ITEMS PER BOX	33
BOXES PER PALLET (MOQ)	4 boxes (132 items)
PALLET SIZE [LxWxH]	80 x 120 x 210 cm [31.5 x 47.2 x 82.7 in]

PRODUCT CODES

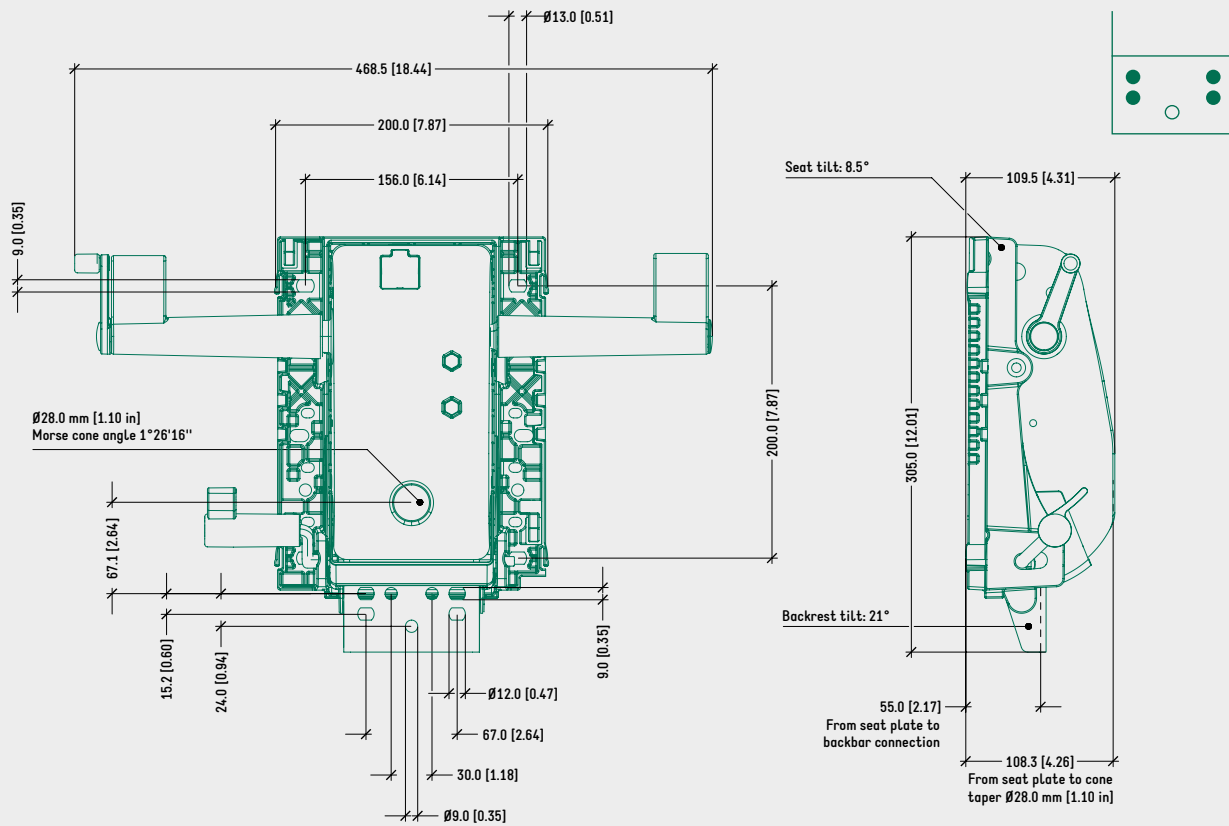
.....

EPRON PLUS

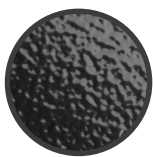
FLEX 1061715

TECHNICAL DRAWING

EPRON PLUS FLEX



SURFACE COLOURS / FINISHES



BLACK PAINTED ALUMINIUM HOUSING



BLACK PLASTIC LEVERS, SEAT PLATE, COVER

RELATED PRODUCTS



DONATI QUICK CONNECTION SLIDING SEAT FAMILY



DONATI BOLT-ON SLIDING OR FIXED SEAT FAMILY



BOLT-ON SEATS 153x200 mm [6.0x7.9 in] CONNECTION



DONATI QUICK CONNECTION ADAPTER PLATE CODE: 4515220



DONATI QUICK CONNECTION SLIDING ADAPTER MODULA 1 CODE: 4515270