

SPECIFICATIONS	
TYPE	Synchro tilt mechanism
TILT ANGLE	26° backrest / 16° seat
BACKREST TILT LOCK	5 positions, by lever
HEIGHT ADJUSTMENT	By lever
[OPT.] SEAT ANGLE ADJUSTMENT	5° backrest / 3° seat
COMFORT	Quick side tension adjustment knob
SEAT CONNECTION	Donati quick connection seat rails
BACK BAR CONNECTION	Donati standard (width 90,0 mm [3.54 in])
MORSE CONE DIAMETER	28,0 mm [1.10 in]
MECHANISM SURFACE FINISH	Black painted
LEVER FINISH	Black
ITEMS PER BOX	24
BOXES PER PALLET (MOQ)	4 boxes (96 items)
PALLET SIZE (LxWxH)	80 x 120 x 210 cm [31.5 x 47.2 x 82.7 in]

## PRODUCT CODES

## CORE

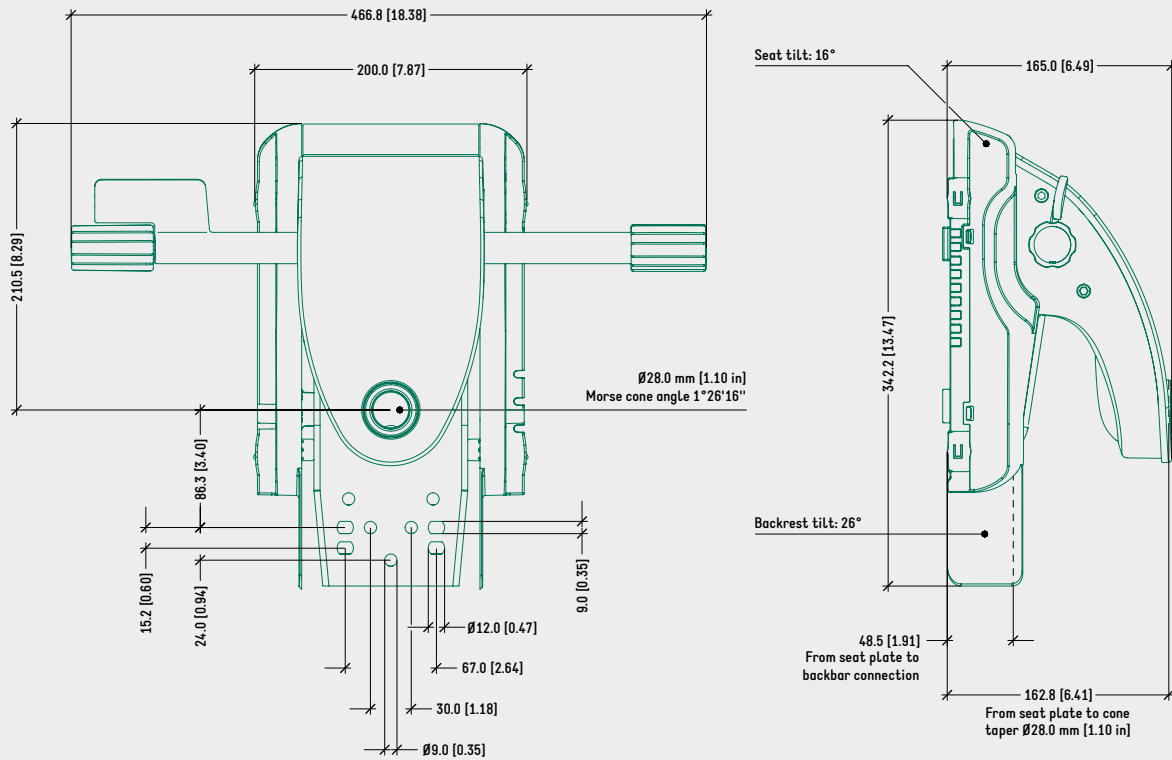
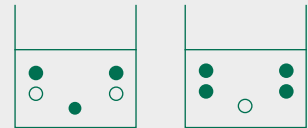
SYNCHRON	1025560
SYNCHRON SEAT ANGLE ADJUSTMENT	1025561

TECHNICAL DRAWING

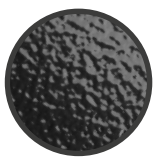
CORE SYNCHRON

CORE SYNCHRON SEAT ANGLE ADJUSTMENT

RECOMMENDED FIXING HOLES FOR BACK SUPPORT CONNECTION (WIDTH 90,0 mm [3,54 in])



SURFACE COLOURS / FINISHES



BLACK PAINTED ALUMINIUM HOUSING



BLACK PLASTIC LEVERS, COVERS, SEAT RAILS

RELATED PRODUCTS



DONATI QUICK CONNECTION SLIDING SEAT FAMILY



DONATI QUICK CONNECTION SLIDING ADAPTER PLATE  
CODE: 4515220



DONATI QUICK CONNECTION SLIDING ADAPTER MODULA 1  
CODE: 4515270