

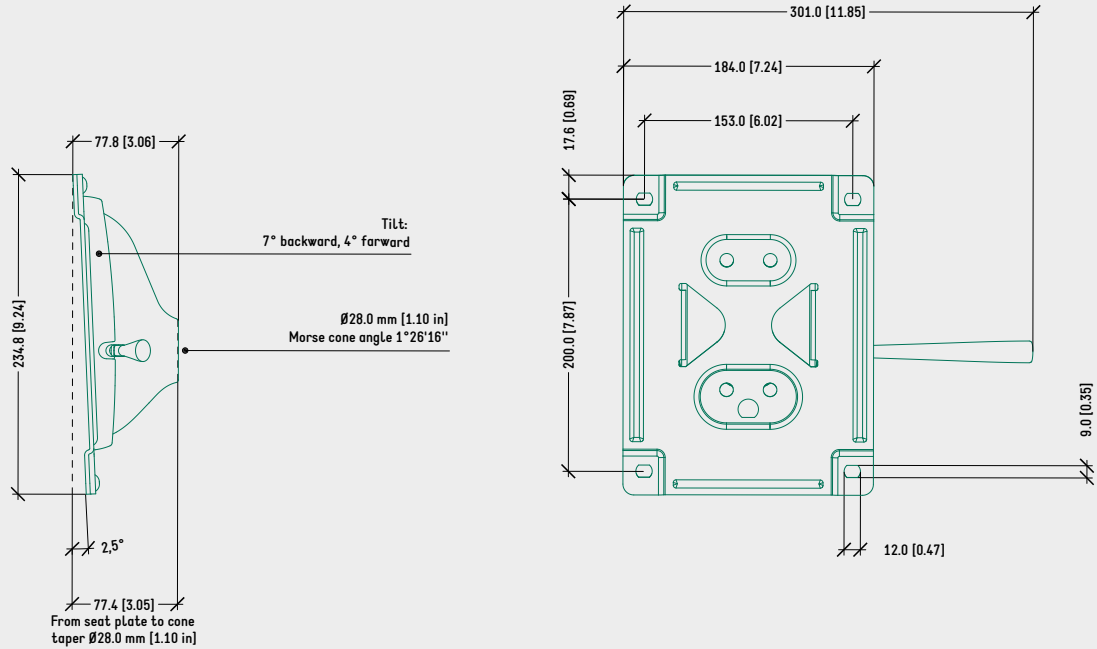
SPECIFICATIONS	
TYPE	Tilt mechanism
TILT ANGLE	7° backwards, 4° forwards
FACTORY SEAT SETUP	2,5° backwards
[OPT.] HEIGHT ADJUSTMENT	By lever
COMFORT	Factory setup
SEAT CONNECTION	Bolt-on plate 153 x 200 mm [6.02 x 7.87 in]
MORSE CONE DIAMETER	28,0 mm [1.10 in]
MECHANISM SURFACE FINISH	— Polished — Black painted
GAS LEVER FINISH	— Chrome (Zamak) — Black painted (Zamak) — Black (Nylon)
TILT WITH HEIGHT ADJUSTMENT	
ITEMS PER BOX	12
BOXES PER PALLET [MOQ]	15 boxes (180 items)
TILT W/O HEIGHT ADJUSTMENT	
ITEMS PER BOX	16
BOXES PER PALLET [MOQ]	15 boxes (240 items)
PALLET SIZE [LxWxH]	80 x 120 x 170 cm [31.5 x 47.2 x 66.9 in]

PRODUCT CODES

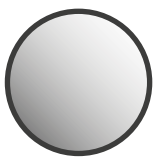
.....	
<u>ARMONICO TILT WITH HEIGHT ADJUSTMENT</u>	
POLISHED	1020445
BLACK PAINTED	1020443
<u>ARMONICO TILT W/O HEIGHT ADJUSTMENT</u>	
POLISHED	1020416
BLACK PAINTED	1020415

TECHNICAL DRAWING

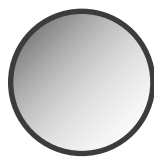
ARMONICO TILT WITH HEIGHT ADJUSTMENT



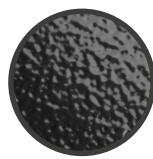
SURFACE COLOURS / FINISHES



POLISHED ALUMINIUM HOUSING



CHROMED ZAMAK LEVER



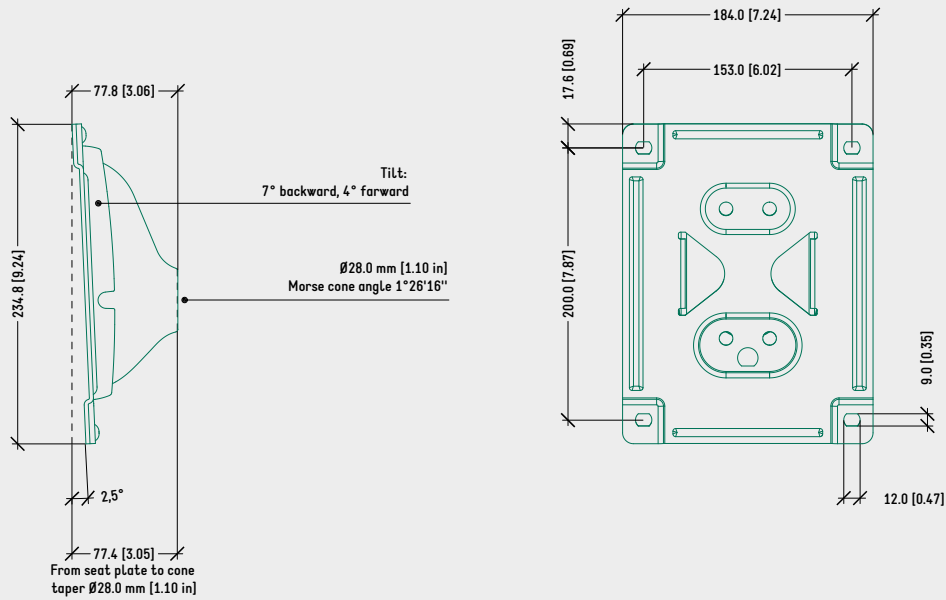
BLACK PAINTED ALUMINIUM HOUSING, LEVER, SEAT PLATE



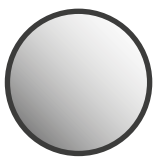
BLACK PLASTIC LEVER, COVER

TECHNICAL DRAWING

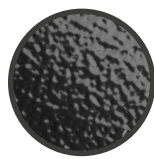
ARMONICO TILT W/O HEIGHT ADJUSTMENT



SURFACE COLOURS / FINISHES



POLISHED ALUMINIUM HOUSING



BLACK PAINTED ALUMINIUM HOUSING, SEAT PLATE



BLACK PLASTIC COVER