

SPECIFICATIONS

TYPE	— Tilt mechanism — Tilt mechanism with tilt lock
TILT ANGLE	7° backwards, 4° forwards
[OPT.] TILT LOCKING	1 position, by lower button
FACTORY SEAT SETUP	3° backwards
HEIGHT ADJUSTMENT	By lever
COMFORT	Factory setup
SEAT CONNECTION	Aluminium plate 153 x 200 mm [6.02 x 7.87 in]
MORSE CONE DIAMETER	28,0 mm [1.10 in]
MECHANISM SURFACE FINISH	— Polished — Black painted
GAS LEVER FINISH	— Chrome (Zamak) — Black painted (Zamak) — Black (Nylon)
ITEMS PER BOX	20
BOXES PER PALLET (MOQ)	15 boxes (300 items)
PALLET SIZE (LxWxH)	80 x 120 x 170 cm [31.5 x 47.2 x 66.9 in]

PRODUCT CODES

.....
ARMONICO ALU PLATE WITH TILT LOCK

POLISHED 1020654

BLACK PAINTED 1020653

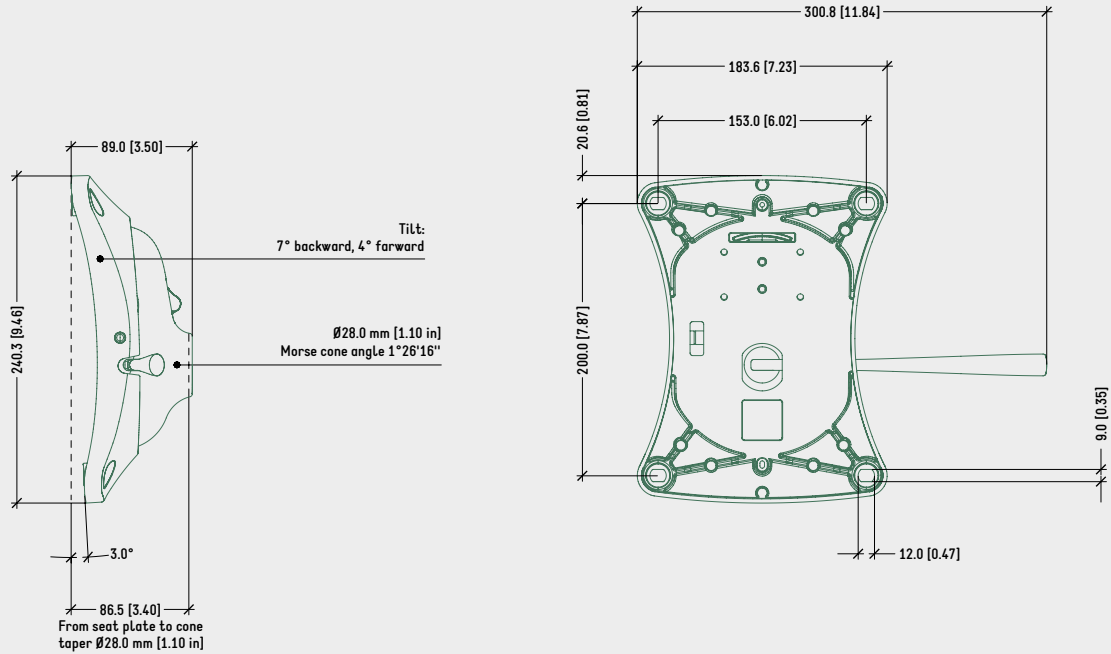
ARMONICO ALU PLATE W/O TILT LOCK

POLISHED On request

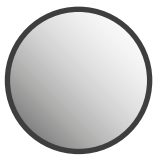
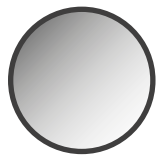
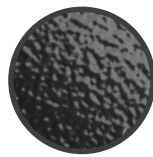
BLACK PAINTED On request

TECHNICAL DRAWING

ARMONICO ALUMINIUM PLATE WITH TILT LOCK

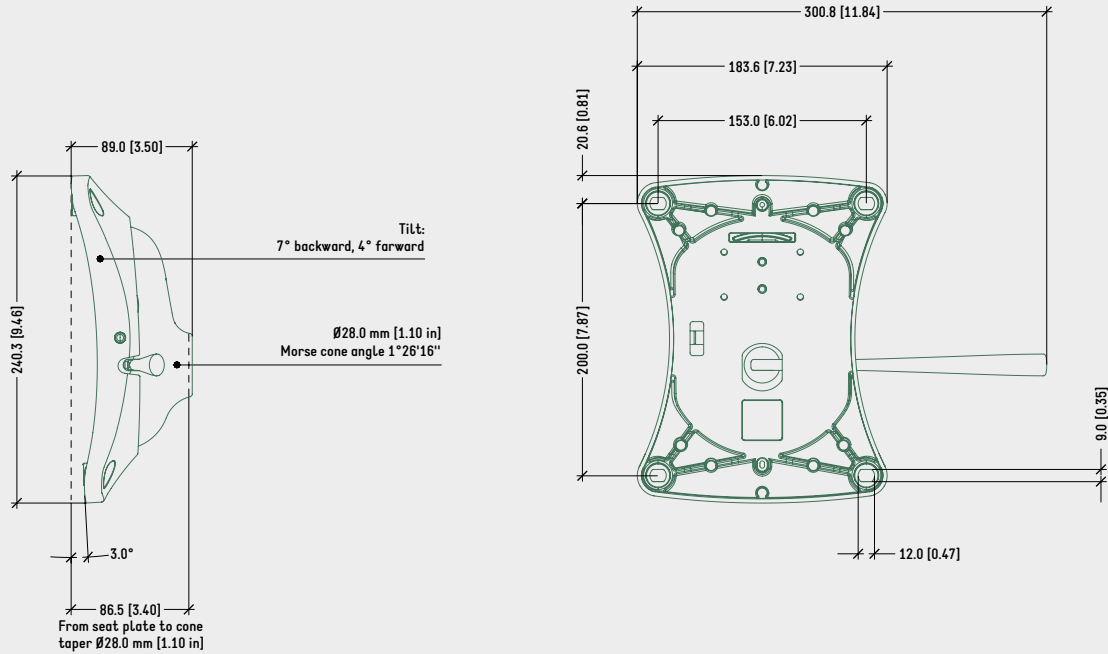


SURFACE COLOURS / FINISHES

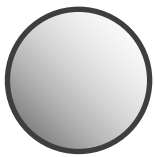
POLISHED ALUMINIUM
HOUSING, SEAT PLATECHROMED ZAMAK
LEVERBLACK PAINTED
ALUMINIUM HOUSING,
LEVER, SEAT PLATEBLACK PLASTIC
LEVER, BUTTON

TECHNICAL DRAWING

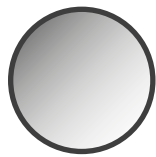
ARMONICO ALUMINIUM PLATE W/O TILT LOCK



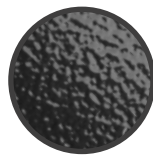
SURFACE COLOURS / FINISHES



POLISHED ALUMINIUM
HOUSING, SEAT PLATE



CHROMED ZAMAK
LEVER



BLACK PAINTED
ALUMINIUM HOUSING,
LEVER, SEAT PLATE