



OPTIONAL: HARD FLOOR
OR CARPET FLOOR GLIDE



SPECIFICATIONS

TYPE	4 star base
MATERIAL	Aluminium
EXTERNAL DIAMETER	725,5 mm [28.56 in]
GLIDES / CASTERS DIAMETER	700,0 mm [27.56 in]
MORSE CONE DIAMETER	— 40,0 mm [1.57 in] — 44,0 mm [1.73 in]
CONE TAPER HEIGHT	309,0 mm [12.17 in]
SURFACE COLOURS / FINISHES	— Polished / Painted — Painted — Sandblasted
WEIGHT	2,76 Kg [6.08 lb]
ITEMS PER BOX	54 / 60
BOXES PER PALLET (MOQ)	2 boxes (108 / 120 items)
PALLET SIZE (LxWxH)	160 x 115 x 220 cm [63.0 x 45.3 x 86.6 in]
DESIGN BY	Marcello Ziliani

PRODUCT CODES

UNICA - MORSE CONE Ø 40 mm

POLISHED / BLACK PAINTED 5010430

POLISHED / SILVER PAINTED 5010431

WHITE (RAL 9002) PAINTED 5010435

GREY (RAL 9006) PAINTED 5010436

RED (RAL 3004) PAINTED 5010439

VERT SABLÉ (YW354F) PAINTED 5010438

ANTHRACITE (NW300M) PAINTED 5010437

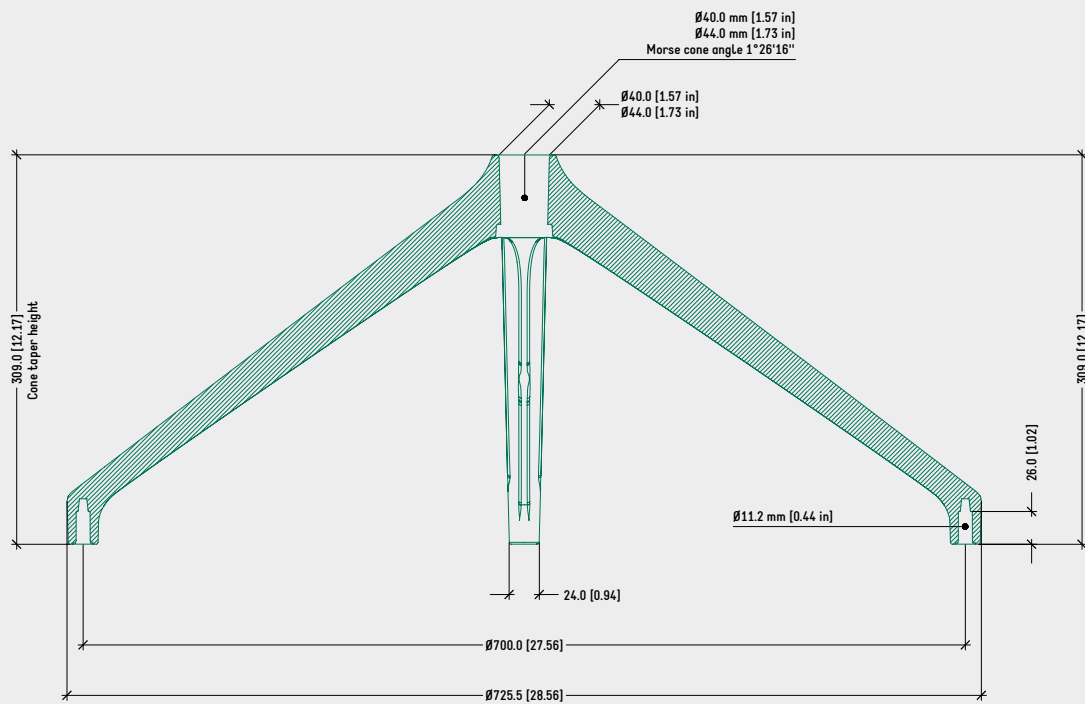
BLACK PAINTED 5010434

SANDBLASTED 5010433

UNICA - MORSE CONE Ø 44 mm On request

TECHNICAL DRAWING

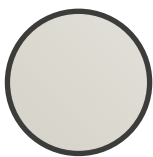
UNICA



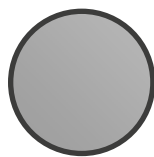
NOTES

- Cone taper height: measured from ground (w/o casters or glides) to Morse cone taper $\varnothing 40 / 44$ mm [1.57 / 1.73 in].
- Minimum recommended distance between gas cylinder and ground for aluminium bases: 15~20 mm [0.59 ~ 0.79 in].

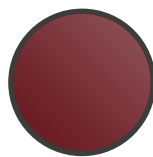
SURFACE COLOURS



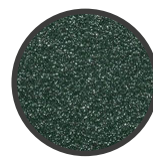
RAL 9002
(WHITE)



RAL 9006
(GREY)



RAL 3004
(RED)

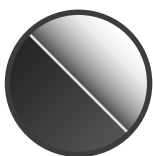


YW354F
(VERT SABLÉ)



NW300M
(ANTHRACITE)

SURFACE FINISHES



POLISHED TOP
PAINTED BOTTOM



PAINTED



SANDBLASTED

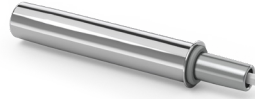
RELATED PRODUCTS



SPIDER SUPPORT
COLLECTION



SWIVEL ADAPTERS
EXT. Ø 40mm
CODES: 4510160/1/2/3



SG215 40 B
CHROME GAS SPRING
EXT. Ø44mm
CODE: 4500085



TAPERED PLASTIC
BUSHING
EXT. Ø44mm > INT. Ø40mm
CODE: 4516007



Ø24 x 5 mm
SMALL GLIDE
HARD FLOOR: 4510100



Ø24 x 5 mm
SMALL GLIDE
CARPET FLOOR: 4510101