



OPTIONAL: HARD FLOOR OR
CARPET FLOOR GLIDE



4 STAR LOW & HIGH
BASES AVAILABLE

SPECIFICATIONS

TYPE	4 star base
MATERIAL	Aluminium
EXTERNAL DIAMETER	700,5 mm [27.58 in]
GLIDES / CASTERS DIAMETER	680,0 mm [26.77 in]
MORSE CONE DIAMETER	— 50,0 mm [1.97 in] — 40,0 mm [1.57 in]
CONE TAPER HEIGHT	221,0 mm [8.70 in]
SURFACE COLOURS / FINISHES	— Polished — Black painted — Sandblasted
WEIGHT	1,91 Kg [4,21 lb]
ITEMS PER BOX	72
BOXES PER PALLET (MOQ)	2 boxes (144 items)
PALLET SIZE [LxWxH]	160 x 115 x 220 cm [63.0 x 45.3 x 86.6 in]
DESIGN	Alberto Lievore

PRODUCT CODES

SUPERLEGGERA - MEDIUM - MORSE CONE Ø 50 mm

POLISHED 5010460

BLACK PAINTED 5010461

SANDBLASTED 5010462

SUPERLEGGERA - MEDIUM - MORSE CONE Ø 40 mm

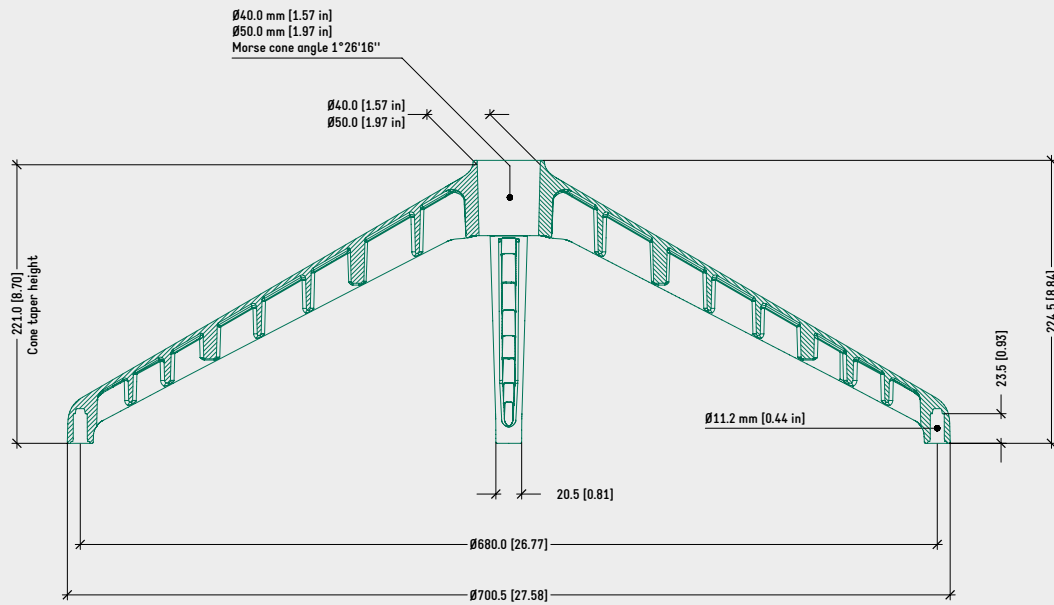
POLISHED 5010455

BLACK PAINTED 5010456

SANDBLASTED 5010457

TECHNICAL DRAWING

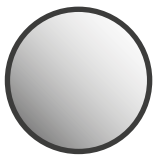
SUPERLEGGERA- 4 STAR - MEDIUM



NOTES

- Cone taper height: measured from ground (w/o casters or glides) to Morse cone taper $\varnothing 50 / 40$ mm [1.97 / 1.57 in].
- Minimum recommended distance between gas cylinder and ground for aluminium bases: 15~20 mm [0.59 ~ 0.79 in].

SURFACE COLOURS / FINISHES



POLISHED



BLACK PAINTED



SANDBLASTED

RELATED PRODUCTS



SUPERLEGGERA
4 AND 5 STAR
BASE COLLECTION



SUPERLEGGERO
SUPPORT COLLECTION



$\varnothing 40$ mm GAS SPRING
COVER
CODE: 4510166



$\varnothing 24 \times 5$ mm
SMALL GLIDE
HARD FLOOR: 4510100
CARPET FLOOR: 4510101



TAPERED PLASTIC
BUSHING
EXT. $\varnothing 50$ mm > INT. $\varnothing 40$ mm
CODE: 4510165