



OPTIONAL: HARD FLOOR
OR CARPET FLOOR GLIDE



4 STAR LOW & MEDIUM
BASES AVAILABLE

SPECIFICATIONS

TYPE	4 star base
MATERIAL	Aluminium
EXTERNAL DIAMETER	690,5 mm [27.18 in]
GLIDES / CASTERS DIAMETER	670,0 mm [26.38 in]
MORSE CONE DIAMETER	— 40,0 mm [1.57 in] — 44,0 mm [1.73 in]
CONE TAPER HEIGHT	308,0 mm [12.13 in]
SURFACE COLOURS / FINISHES	— Polished — Black painted — Sandblasted
WEIGHT	2,18 Kg [4,80 lb]
ITEMS PER BOX	54
BOXES PER PALLET (MOQ)	2 boxes (108 items)
PALLET SIZE [LxWxH]	160 x 115 x 220 cm [63.0 x 45.3 x 86.6 in]

PRODUCT CODES

..... SUPERLEGGERA - HIGH - MORSE CONE Ø 40 mm

POLISHED 5010480

BLACK PAINTED 5010481

SANDBLASTED 5010482

SUPERLEGGERA - HIGH - MORSE CONE Ø 44 mm

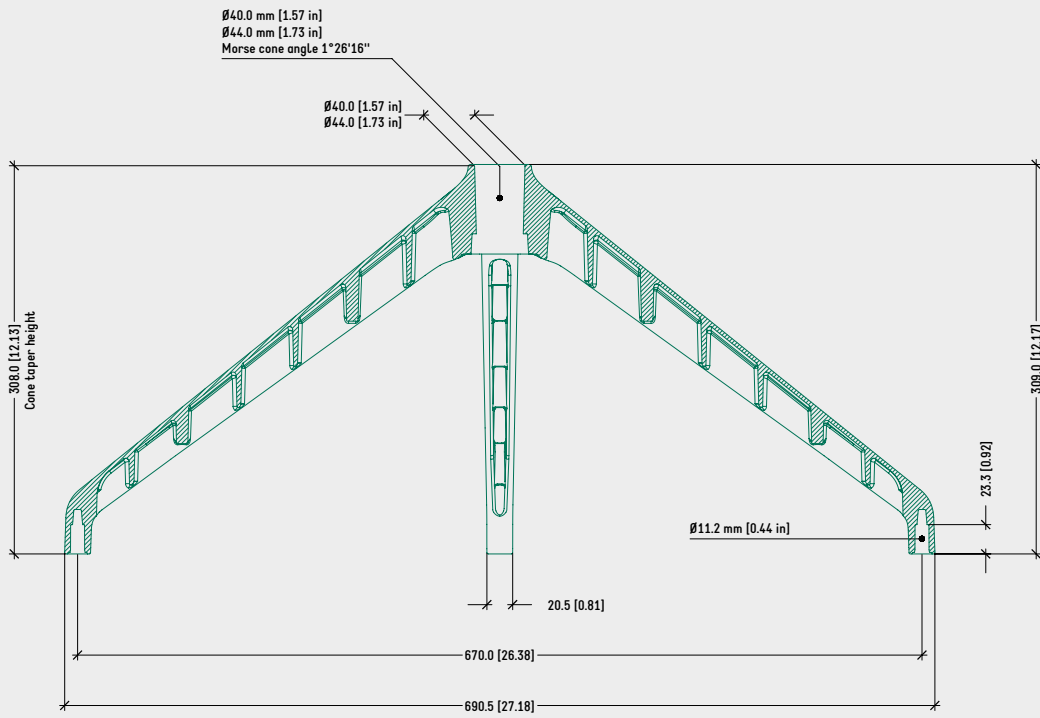
POLISHED 5010490

BLACK PAINTED 5010491

SANDBLASTED 5010492

TECHNICAL DRAWING

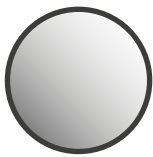
SUPERLEGGERA - 4 STAR - HIGH



NOTES

- Cone taper height: measured from ground (w/o casters or glides) to Morse cone taper \varnothing 40 / 44 mm [1.57 / 1.73 in].
- Minimum recommended distance between gas cylinder and ground for aluminium bases: 15~20 mm [0.59 ~ 0.79 in].

SURFACE COLOURS / FINISHES



POLISHED



BLACK PAINTED



SANDBLASTED

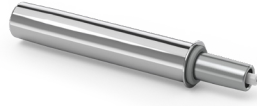
RELATED PRODUCTS



SUPERLEGGERA
4 AND 5 STAR
BASE COLLECTION



SUPERLEGGERO
SUPPORT COLLECTION



SG215 40 B
CHROME GAS SPRING
EXT. Ø44mm
CODE: 4500085



SWIVEL ADAPTERS
EXT. Ø 40mm
CODES: 4510160/1/2/3



Ø 40mm GAS
SPRING COVER
CODE: 4510166



Ø24 x 5 mm
SMALL GLIDE
HARD FLOOR: 4510100



Ø24 x 5 mm
SMALL GLIDE
CARPET FLOOR: 4510101



TAPERED PLASTIC
BUSHING
EXT.Ø44mm>INT.Ø40mm
CODE: 4516007