



## SPECIFICATIONS

TYPE	Round fixed base
MATERIAL	Nylon + GF / Aluminium
EXTERNAL DIAMETER	470,0 mm [18.50 in]
MORSE CONE DIAMETER	— 50,0 mm [1.97 in] — 40,0 mm [1.57 in]
CONE TAPER HEIGHT	— 118,9 mm [4.68 in] (Morse cone Ø 50 mm) — 108,5 mm [4.27 in] (Morse cone Ø 40 mm)
SURFACE COLOURS / FINISHES	— Photoengraved base / Polished pivot — Photoengraved base / Black painted pivot

## PRODUCT CODES

## DISKO - MORSE CONE Ø 50 mm

POLISHED PIVOT 4510303

BLACK PAINTED PIVOT On request

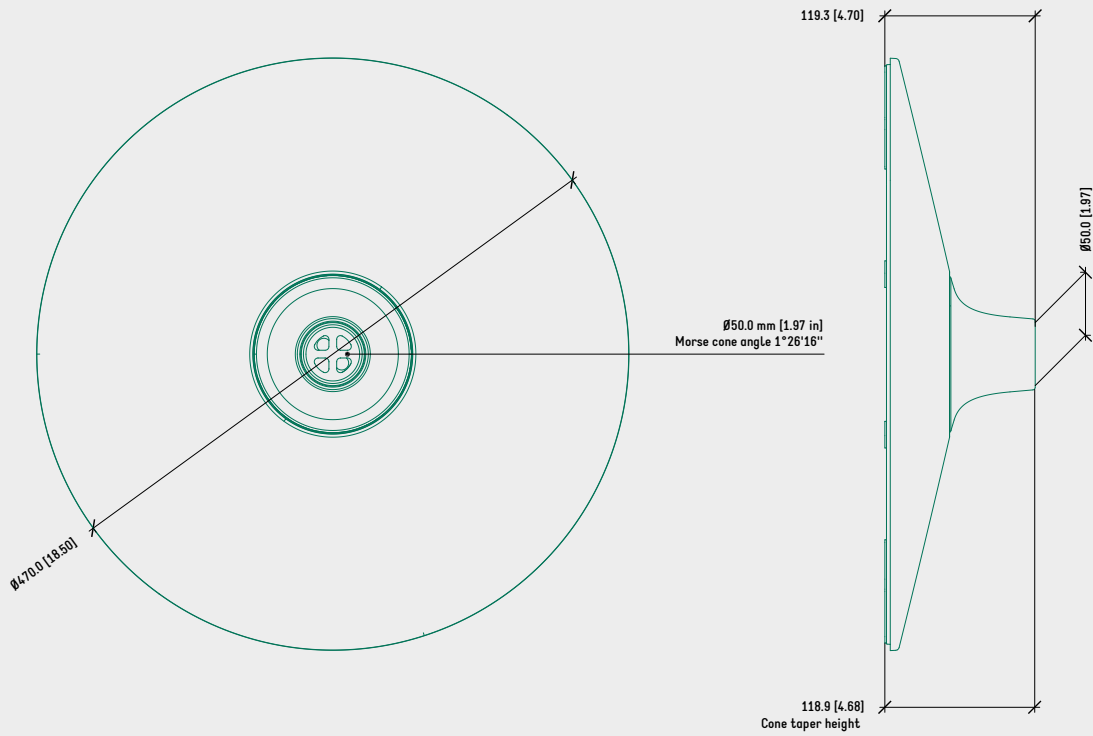
## DISKO - MORSE CONE Ø 40 mm

POLISHED PIVOT On request

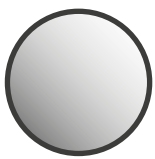
BLACK PAINTED PIVOT 4510300

TECHNICAL DRAWING

DISKO - MORSE CONE Ø 50 mm



SURFACE COLOURS / FINISHES



POLISHED  
PIVOT



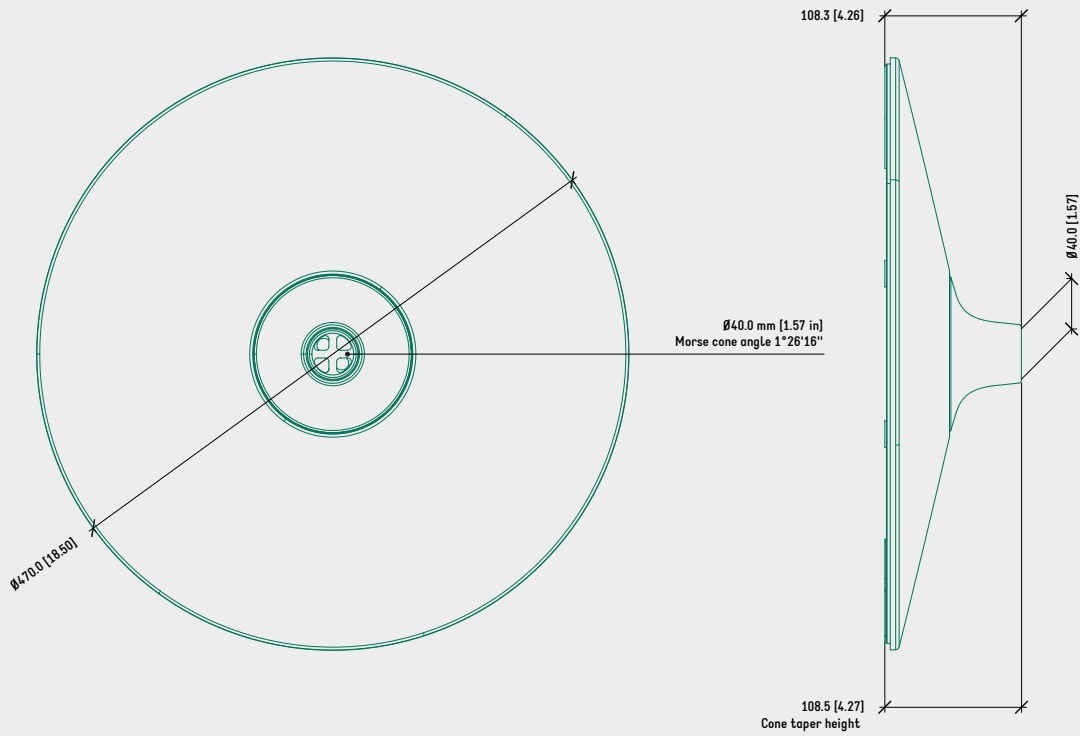
BLACK PAINTED  
PIVOT



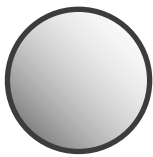
PHOTOENGRAVED  
[NOVATEX 340]  
BASE

TECHNICAL DRAWING

DISKO - MORSE CONE Ø 40 mm



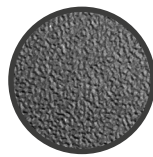
SURFACE COLOURS / FINISHES



POLISHED  
PIVOT



BLACK PAINTED  
PIVOT



PHOTOENGRAVED  
[NOVATEX 340]  
BASE