



AVAILABLE WITH
MESH ASSEMBLED

SPECIFICATIONS

TYPE	Mesh / upholstered backrest
MATERIAL	Nylon + GF
LUMBAR SUPPORT HEIGHT ADJ.	100,0 mm [3.94 in]
MECHANISM CONNECTION	DONATI standard (width 90 mm [3.54 in])
MESH/UPHOLSTERY FIXING	By staples
SURFACE FINISHES	Photoengraved (Novatex 7381)
COLOUR FINISHES	— Black — Other colours available on request

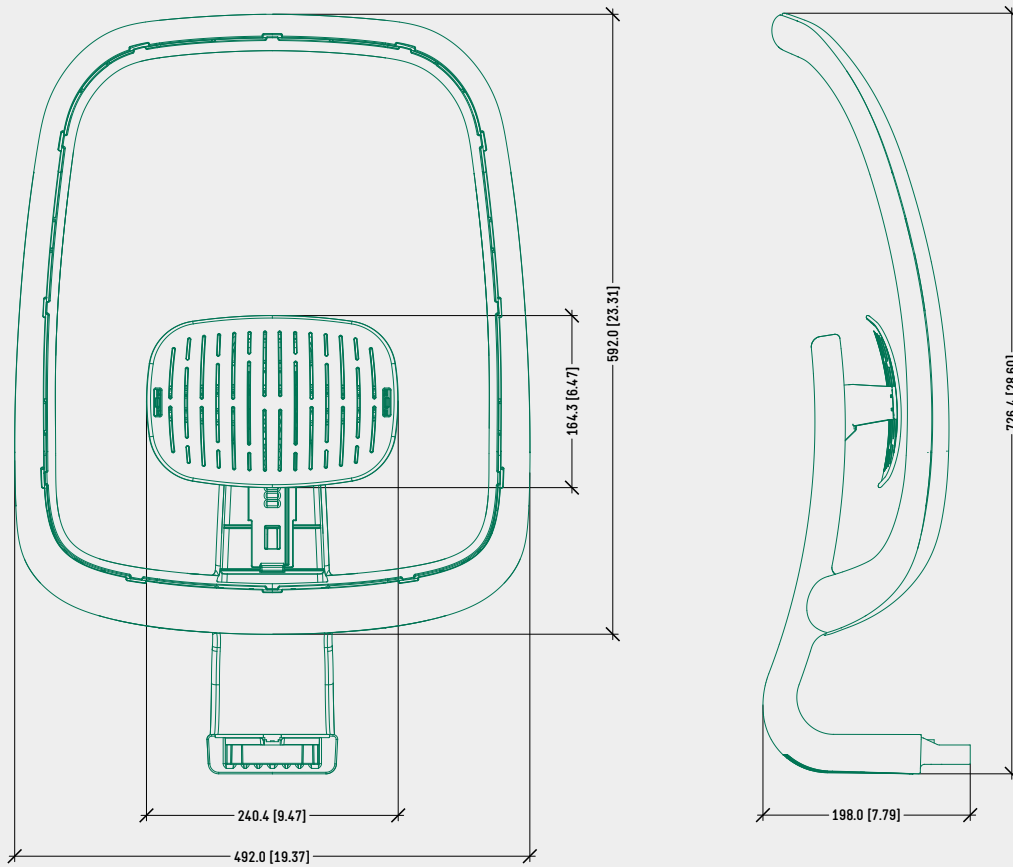
PRODUCT CODES

CLIPPER HIGH

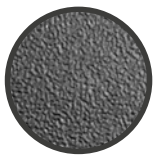
4515750

TECHNICAL DRAWING

CLIPPER HIGH



SURFACE COLOURS / FINISHES



PHOTOENGRAVED
[NOVATEX 7381]
BACKREST